

# GLENCOE TOWNSHIP

Each township has six files containing six sections in each, and one file containing all 36 sections.

Glencoe01to06.pdf

Glencoe07to12.pdf

Glencoe13to18.pdf

Glencoe19to24.pdf

Glencoe25to30.pdf

Glencoe31to36.pdf

GlencoeAll36.pdf

The points are listed starting with the point above the SE corner and continuing in a counter-clockwise rotation around the section. This normally begins with the East point, Northeast, then North, but may also include Witness Corners, and/or Meander Corners.

## **Definitions**

**Witness Corner:** A witness corner “stands in” when the true corner cannot be monumented or occupied because of difficult terrain or obstruction of the corner sight. The witness corner must be on the section line and is usually 5 or 10 chains away from the true corner.

**Meander Corner:** The intersection of a township, range, or section line and the banks of a navigable stream or meandering body of water.

# Certificate of Location of Government Corner

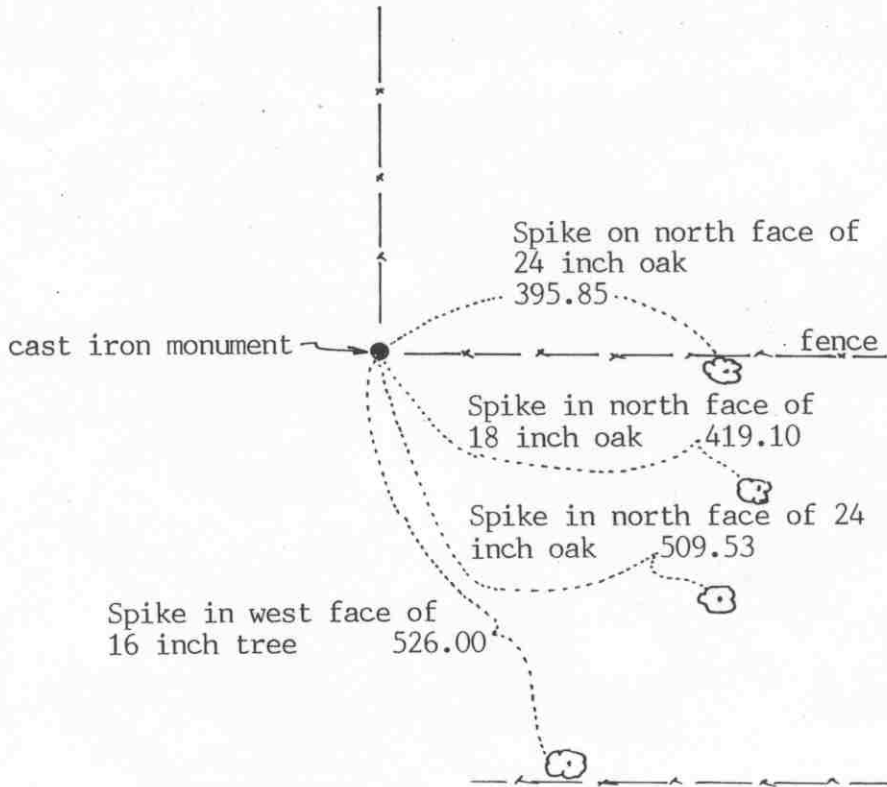


## SKETCH OF REFERENCE TIES

(NO SCALE)

SECTION 31

SECTION 32



Statement of evidence relative to this corner location on sheet 2

I hereby certify that this document was prepared by me or under my direct supervision.

Willard Pellinen

Willard Pellinen  
McLeod County Surveyor  
License No. 9626

Date August 23, 1991

OFFICE OF THE COUNTY RECORDER  
MCLEOD COUNTY, MINNESOTA.

I hereby certify that this document was filed in this office at 9 o'clock A.M. on the 26th day of Aug, 1991.

Carmen Potlie, County Recorder

By \_\_\_\_\_, Deputy

Document No. 240529

## *Certificate of Location of Government Corner*

July, 1855. This corner was not set by the original Government survey. The corner fell in a pond. A.H. Runyon of the General Land Office raised a witness mound with trench as per instructions and planted apple seeds at the southeast corner of the mound. This was 6.20 links south of the quarter corner.

June 25, 1974. McCombs Knutson Associates (Dickman Knutson, county surveyor) set a McLeod County cast iron monument at a fence corner which has been accepted as the quarter corner by adjoining land owners.

June 7, 1990. We found the monument in good condition and checked the reference ties.

There being no evidence to the contrary, we accept the monument set by Knutson as marking the quarter corner.

# Certificate of Location of Government Corner

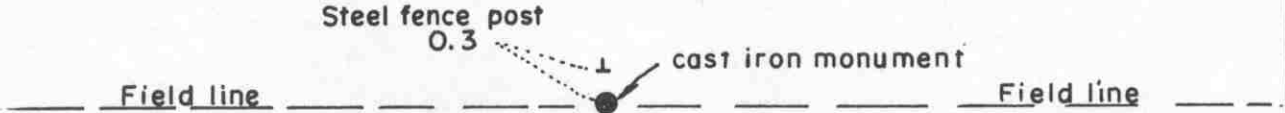
NORTHEAST corner, Section 31, Township 115 North, Range 28 West

SKETCH OF REFERENCE TIES (NO SCALE)



SECTION 30

SECTION 29



SECTION 31

SECTION 32

Statement of evidence relative to this corner location on sheet 2

I hereby certify that this document was prepared by me or under my direct supervision.

Willard Pellinen  
Willard Pellinen  
McLeod County Surveyor  
License No. 9626.

Date April 20, 1995

OFFICE OF THE COUNTY RECORDER  
MCLEOD COUNTY, MINNESOTA

I hereby certify that this document was filed in this office at 9 o'clock A.M. on the 24th day of Apr 19 95.

Carmen Potlie Mulder, County Recorder

By \_\_\_\_\_, Deputy.

Document No. 265318

***Certificate of Location of Government Corner  
Northeast Corner, Section 31, Township 115 North, Range 28 West***

***July, 1855. A. H. Runyon of the General Land Office established this corner. He set a post, drove a charred stake, raised mound with trench and planted apple seeds at the southeast corner of the mound.***

***June 25, 1974. Dickman Knutson, county surveyor, replaced a found iron pipe with a McLeod County cast iron monument. No occupation lines at the corner. A ditch to the west is north of the section line, according to adjoining land owners.***

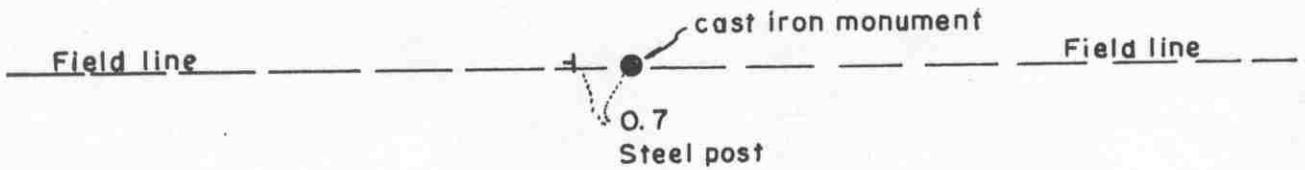
***January 31, 1995. We found the monument in good condition and took new tie to steel post. Field lines now running east and west.***

# Certificate of Location of Government Corner

NORTH QUARTER corner, Section 31, Township 115 North, Range 28 West

SKETCH OF REFERENCE TIES (NO SCALE)

SECTION 30



SECTION 31

Statement of evidence relative to this corner location on sheet 2

I hereby certify that this document was prepared by me or under my direct supervision.

Willard Pellinen  
Willard Pellinen  
McLeod County Surveyor  
License No. 9626.

Date April 20, 1995.

OFFICE OF THE COUNTY RECORDER  
MCLEOD COUNTY, MINNESOTA

I hereby certify that this document was filed in this office at 9 o'clock A.M. on the 24th day of Apr 19 95.

Carmen Dottie Mulder, County Recorder

By \_\_\_\_\_, Deputy.

Document No. 265319

**Certificate of Location of Government Corner**  
**North Quarter Corner, Section 31, Township 115 North, Range 28 West**

*July, 1855. A. H. Runyon of the General Land Office established this corner. He set a post, drove a charred stake, raised mound with trench and planted apple seeds at the southeast corner of the mound.*

*1973. East-west fence and north-south field line have been accepted by adjoining land owners as quarter lines.*

*April 4, 1973. Dickman Knutson, county surveyor, set a McLeod County cast iron monument at the intersection of the fence and field line. Mr. John Albrecht, 74 years old, showed a hole where he thought a stone used to be, marking the corner, at the intersection.*

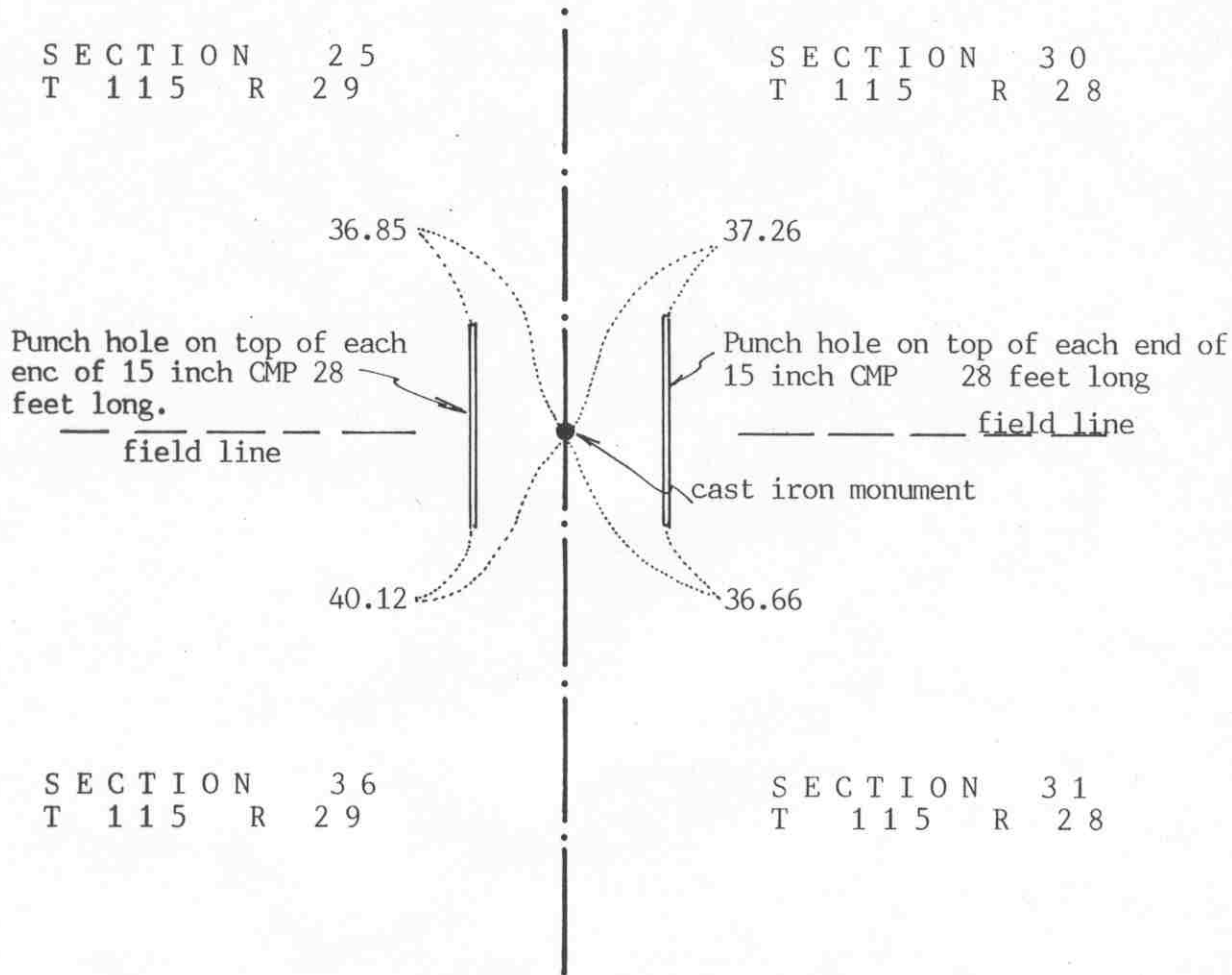
*January 31, 1995. We checked the reference ties. East-fence now a field line. No field line to south.*

# Certificate of Location of Government Corner



## SKETCH OF REFERENCE TIES

(NO SCALE)



Statement of evidence relative to this corner location on sheet 2

I hereby certify that this document was prepared by me or under my direct supervision.

Willard Pellinen  
Willard Pellinen  
McLeod County Surveyor  
License No. 9626

Date August 23, 1991

OFFICE OF THE COUNTY RECORDER  
MCLEOD COUNTY, MINNESOTA.

I hereby certify that this document was filed in this office at 9 o'clock A.M. on the 27th day of August, 1991.

Carmen Ostlie, County Recorder

By \_\_\_\_\_, Deputy

Document No. 240561



NORTHEAST corner, Section 36, Township 115 North, Range 29 West

## Certificate of Location of Government Corner

July, 1855. John Ryan of the General Land Office set a post, deposited charcoal, dug pits and trench, built mound and planted osage orange seeds at the corners of the mound.

October 3, 1970. McCombs Knutson Associates (Dickman Knutson, county surveyor) dug for the corner, John Tupa from Hutchinson with a backhoe. Down  $3\frac{1}{2}$  feet below the surface of the gravel road, they found a very rotted wood stake. They took available reference ties. This stake was in the center of the north south gravel road in line with field lines to the east and west.

October 13, 1970. Knutson set a McLeod County cast iron monument and took additional ties.

June 13, 1990. We found the monument in good condition down 8 inches below the surface of the gravel road. All the old reference ties were destroyed so we took new available ties.

We accept the stake found by Knutson as having perpetuated the correct location of the section corner. It fits long standing occupation lines, the center line of the road and the field lines to the east and west.

# Certificate of Location of Government Corner

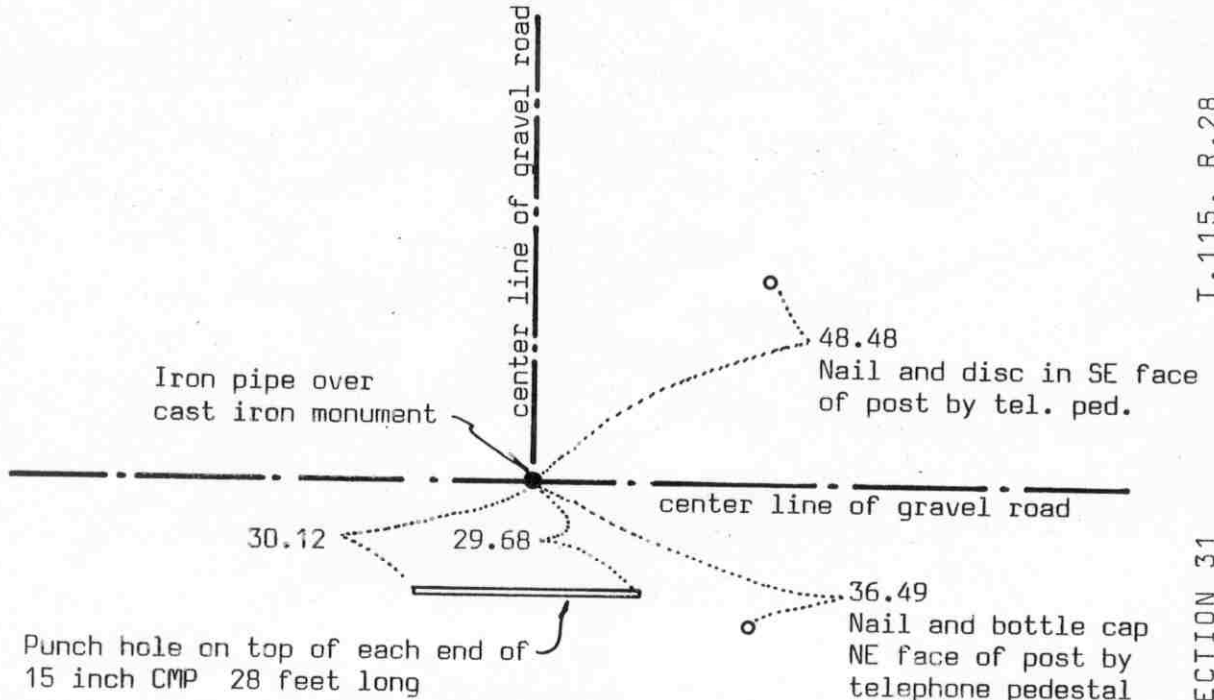
## SKETCH OF REFERENCE TIES (NO SCALE)



SECTION 36, T.115, R.29

T.115, R.28

SECTION 31



### Statement of evidence relative to this corner location on sheet 2

I hereby certify that this document was prepared by me or under my direct supervision.

Willard Pellinen

Willard Pellinen  
McLeod County Surveyor  
License No. 9626

Date July 16, 1990

### OFFICE OF THE COUNTY RECORDER MCLEOD COUNTY, MINNESOTA.

I hereby certify that this document was filed in this office at 2 o'clock P. M. on the 23rd day of July, 1990.

Carmen Ostlie, County Recorder

By \_\_\_\_\_, Deputy

Document No. 234557

EAST QUARTER corner, Section 36, Township 115 North, Range 29 West

## Certificate of Location of Government Corner

July, 1855. This corner was set by John Ryan of the General Land Office. He set a post, deposited charcoal, dug pits and trench, built mound and planted osage orange seeds at the corners of the mound.

October 3, 1970. McCombs Knutson Associates (Dickman Knutson, county surveyor) dug for the corner, John Tupa from Hutchinson with a backhoe. They dug a hole 12 feet by 8 feet by 5 feet deep but found nothing.

October 13, 1970. Knutson set a McLeod County cast iron monument at the center line intersection of the roads. Adjoining land owners all have accepted the center lines as marking the section and quarter section lines.

April 15, 1976. Knutson checked the east-west quarter line of Section 36 and found that the road runs along the quarter near the center of the section.

June 7, 1989. We found the monument in good condition down 18 inches below the road surface. We set a  $\frac{1}{2}$  inch diameter iron pipe over the monument and took new reference ties.

We feel the center lines of the roads have perpetuated the correct location of the quarter corner.

NORTHEAST corner, Section 1, Township 114 North, Range 29 West

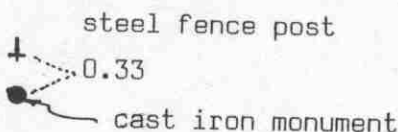
# Certificate of Location of Government Corner

SKETCH OF REFERENCE TIES  
(NO SCALE)



SECTION 36, T.115, R.29

SECTION 31, T.115, R.28



SECTION 1, T.114, R.29

SECTION 6, T.114, R.28

Statement of evidence relative to this corner location on sheet 2

I hereby certify that this document was prepared by me or under my direct supervision.

Willard Pellinen  
Willard Pellinen  
McLeod County Surveyor  
License No. 9626

Date July 16, 1990

OFFICE OF THE COUNTY RECORDER  
MCLEOD COUNTY, MINNESOTA.

I hereby certify that this document was filed in this office at 2 o'clock P.M. on the 23rd day of July, 1990.

Carmen Helie, County Recorder

By \_\_\_\_\_, Deputy

Document No. 234549

## *Certificate of Location of Government Corner*

This corner was originally set by the government in 1855. John Ryan set a post, deposited charcoal, dug pits and trench, built mound and planged osage orange seeds at the corners of the mound.

1974. Delbert Rieke, Sibley County Surveyor, set a cast iron monument at the corner. He used lost methods to reestablish the corner.

June 2, 1989. We found the cast iron monument in good condition. Only 1 available tie, a steel fence post 0.33 feet north of the monument.

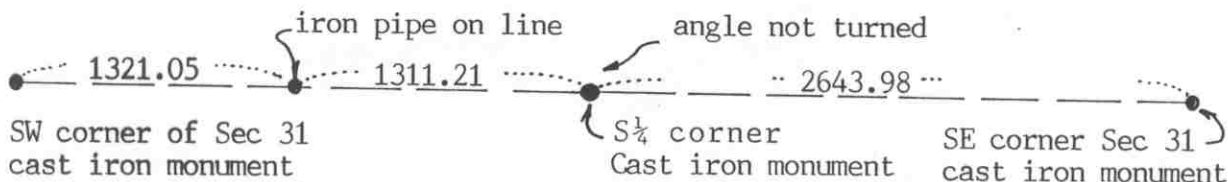
# Certificate of Location of Government Corner



SKETCH OF REFERENCE TIES

(NO SCALE)

SECTION 31 T. 115 R. 28



SECTION 6 T. 114 R. 28

Statement of evidence relative to this corner location on sheet 2

I hereby certify that this document was prepared by me or under my direct supervision.

Willard Pellinen

Willard Pellinen  
McLeod County Surveyor  
License No. 9626

Date August 22, 1991

OFFICE OF THE COUNTY RECORDER  
MCLEOD COUNTY, MINNESOTA.

I hereby certify that this document was filed in this office at 9 o'clock A.M. on the 26th day of Aug 1991.

Carmen Botlie, County Recorder

By \_\_\_\_\_, Deputy

Document No. 240531

SOUTH QUARTER corner, Section 31, Township 115 North, Range 28 West

## Certificate of Location of Government Corner

1855. John Ryan of the General Land Office set a post, deposited charcoal, dug pits and trench, built mound and planted osage orange seeds at the corners of the mound.

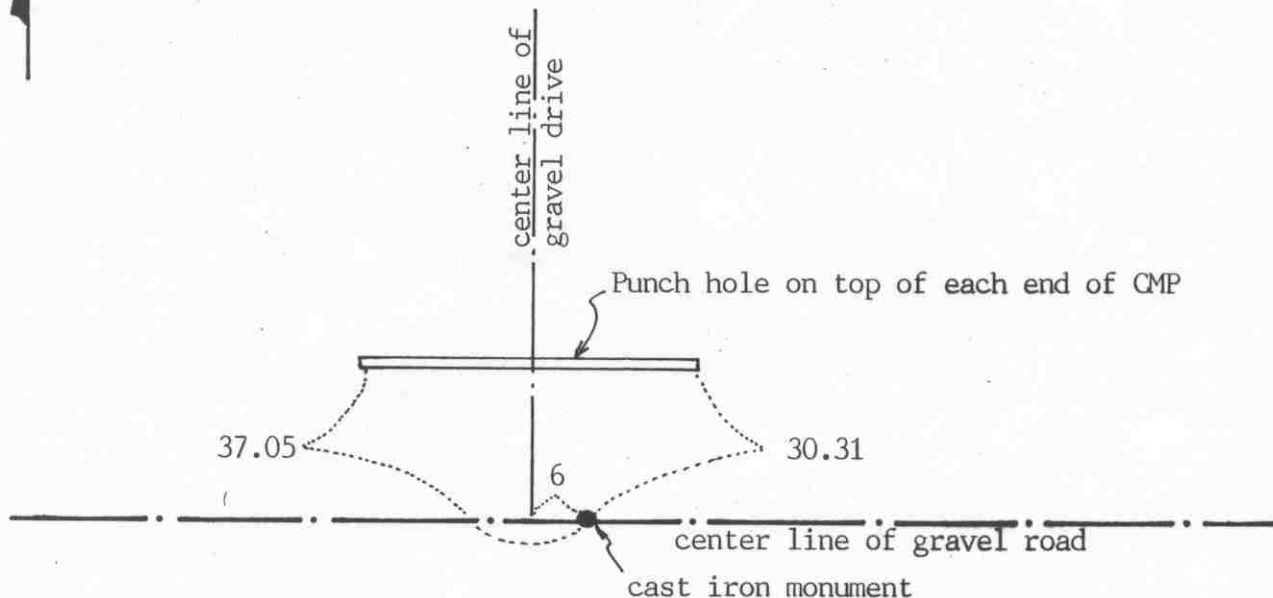
November 6, 1970. McCombs Knutson Associates (Dickman Knutson, county surveyor) found a 3 foot long axle and a U shaped iron below the axle. They set a McLeod County cast iron monument and took reference ties.

June 7, 1990. We found the monument in good condition but all the reference ties destroyed. We took measurements to the southeast and southwest corners of the section.

# Certificate of Location of Government Corner



SKETCH OF REFERENCE TIES  
(NO SCALE)



Statement of evidence relative to this corner location on sheet 2

I hereby certify that this document was prepared by me or under my direct supervision.

Willard Pellinen

Willard Pellinen  
McLeod County Surveyor  
License No. 9626

Date August 3, 1991

OFFICE OF THE COUNTY RECORDER  
MCLEOD COUNTY, MINNESOTA.

I hereby certify that this document was filed in this office at 9 o'clock A.M. on the 26th day of Aug 1991.

Carmen Oelie, County Recorder

By \_\_\_\_\_, Deputy

Document No. 240530



SOUTHEAST corner, Section 31, Township 115 North, Range 28 West

## Certificate of Location of Government Corner

1855. John Ryan of the General Land Office originally established this corner. He set a post, deposited charcoal, dug pits and trench, built mound and planted osage orange seeds at the corners of the mound.

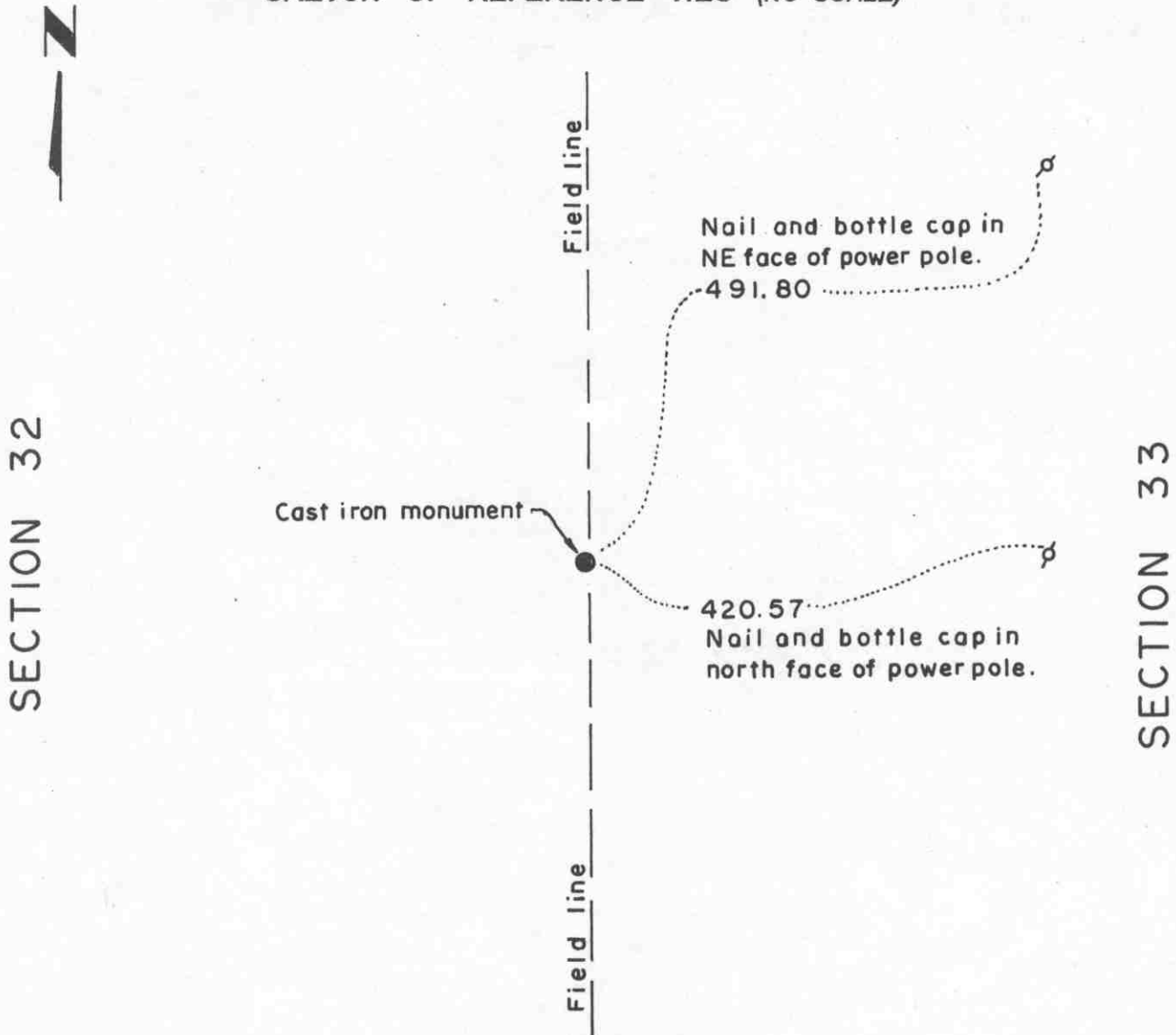
This corner was reestablished by the Sibley County Surveyor in 1974. Adjoining land owners stated the east-west road was moved to the south when it was rebuilt to be on the section line. Del Rieke, Sibley County Surveyor, set a cast iron monument half way between the south quarter corner of Section 31 and the south quarter corner of Section 32, on the center line of the east-west road.

June 7, 1990. We found the cast iron monument down 10 inches below the surface of the road and took available reference ties.

# Certificate of Location of Government Corner

EAST QUARTER corner, Section 32, Township 115 North, Range 28 West

SKETCH OF REFERENCE TIES (NO SCALE)



Statement of evidence relative to this corner location on sheet 2

I hereby certify that this document was prepared by me or under my direct supervision.

Willard Pellinen  
Willard Pellinen  
McLeod County Surveyor  
License No. 9626.

Date April 20, 1995.

OFFICE OF THE COUNTY RECORDER  
MCLEOD COUNTY, MINNESOTA

I hereby certify that this document was filed in this office at 9 o'clock A. M. on the 29th day of Apr 19 95.

Carman Pellic Mulder, County Recorder

By \_\_\_\_\_, Deputy.

Document No. 265320

**Certificate of Location of Government Corner**  
**East Quarter Corner, Section 32, Township 115 North, Range 28 West**

*July, 1855. A. H. Runyon of the General Land Office established this corner. He set a post, drove a charred stake, raised mound with trench and planted apple seeds at the southeast corner of the mound.*

*November 13, 1973. Dickman Knutson, county surveyor, set a McLeod County cast iron monument along a north-south field line at a point where the westerly prolongation of an old east-west fence, as per testimony of land owner.*

*January 31, 1995. We checked the reference ties.*

# Certificate of Location of Government Corner

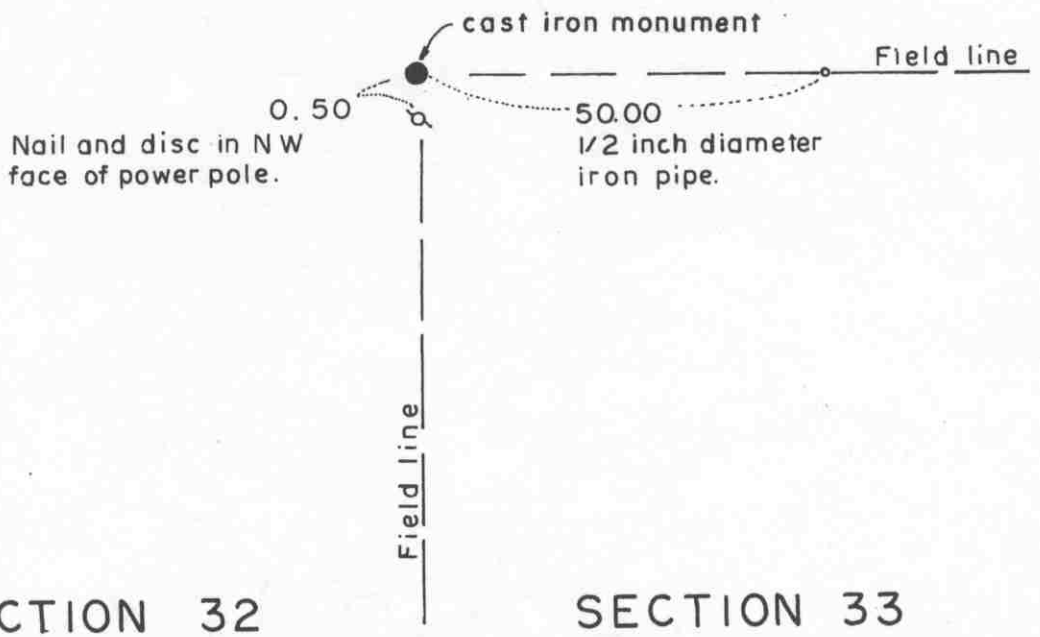
NORTHEAST corner, Section 32, Township 115 North, Range 28 West

SKETCH OF REFERENCE TIES (NO SCALE)



SECTION 29

SECTION 28



Statement of evidence relative to this corner location on sheet 2

I hereby certify that this document was prepared by me or under my direct supervision.

Willard Pellinen  
Willard Pellinen  
McLeod County Surveyor  
License No. 9626.

Date March 20, 1995

OFFICE OF THE COUNTY RECORDER  
MCLEOD COUNTY, MINNESOTA

I hereby certify that this document was filed in this office at 1 o'clock P. M. on the 31st day of March 19 95.

Carmen Aschier Mulder, County Recorder

By \_\_\_\_\_, Deputy.

Document No. 264942

**Certificate of Location of Government Corner**  
**Northeast Corner, Section 32, Township 115 North, Range 28 West**

*July, 1855. A. H. Runyon of the General Land Office established this corner. He set a post, drove a charred stake, raised mound with trench and planted apple seeds at the southeast corner of the mound.*

*1972. Adjoining land owners have accepted the intersection of a north-south field line and power pole line with a field line running east as the section corner.*

*October 19, 1973. Dickman Knutson, county surveyor, set a McLeod County cast iron monument at this intersection and took available reference ties.*

*January 31, 1995. We checked the reference ties.*

# Certificate of Location of Government Corner

NORTH QUARTER corner, Section 32, Township 115 North, Range 28 West

SKETCH OF REFERENCE TIES (NO SCALE)



SECTION 29

Fence

Field line

cast iron monument

T

0.6

Steel fence post

SECTION 32

Statement of evidence relative to this corner location on sheet 2

I hereby certify that this document was prepared by me or under my direct supervision.

Willard Pellinen  
Willard Pellinen  
McLeod County Surveyor  
License No. 9626.

Date April 20, 1995

OFFICE OF THE COUNTY RECORDER  
MCLEOD COUNTY, MINNESOTA

I hereby certify that this document was filed in this office at 9 o'clock A M. on the 24th day of Apr 19 95.

Carmen Polie Mulder, County Recorder

By \_\_\_\_\_, Deputy.

Document No. 265321

**Certificate of Location of Government Corner**  
**North Quarter Corner, Section 32, Township 115 North, Range 28 West**

*July, 1855. A. H. Runyon of the General Land Office established this corner. This corner fell in a marsh and he set a witness corner 1350 links east of the true corner. He set a post, at the witness corner, drove a charred stake, raised mound with trench and planted apple seeds at the southeast corner of the mound.*

*June 25, 1974. Dickman Knutson replaced a found 12 inch by 16 inch by 16 inch stone and iron pin with a McLeod County cast iron monument. This was at the south end of a north-south fence.*

*January 31, 1995. We found the monument in good condition and checked the tie to a steel fence post. Field lines now running east and west and fence now ends farther north.*

# Certificate of Location of Government Corner

SOUTH QUARTER corner, Section 32, Township 115 North, Range 28 West

SKETCH OF REFERENCE TIES (NO SCALE)

SECTION 32, T. 115 N., R. 28 W



● cast iron monument  
no available ties

SECTION 5, T. 114 N., R. 28 W.

## Statement of evidence relative to this corner location on sheet 2

I hereby certify that this document was prepared by me or under my direct supervision.

Willard Pellinen  
Willard Pellinen  
McLeod County Surveyor  
License No. 9626.

Date Feb. 2, 1995

## OFFICE OF THE COUNTY RECORDER MCLEOD COUNTY, MINNESOTA

I hereby certify that this document was filed in this office at 9 o'clock A .M. on the 6th day of February, 19 95.

Carmen Othlie Mulder County Recorder

By \_\_\_\_\_, Deputy.

Document No. 264022



**Certificate of Location of Government Corner**  
**South Quarter Corner, Section 32, Township 115 North, Range 28 West**

**1855. John Ryan of the General Land Office established this corner. He set a post, deposited charcoal, dug pits and trench, built mound and planted osage orange seeds at the corners of the mound.**

**1974. Delbert Rieke, Sibley County Surveyor, set a cast iron monument on a proportional distance between the south quarter corner of Section 31 and the southeast corner of Section 32 on the easterly prolongation of a fence. This location was accepted by Dickman Knutson, McLeod County Surveyor.**

# Certificate of Location of Government Corner

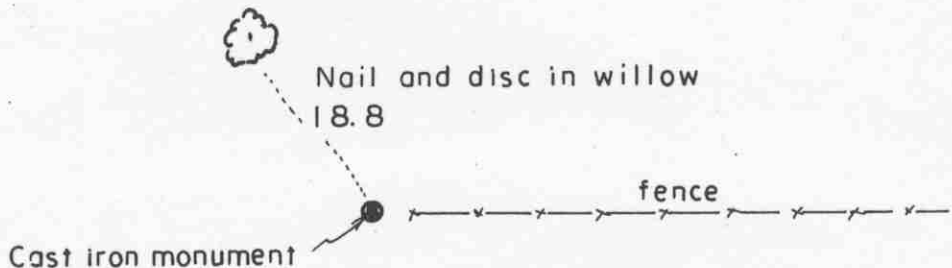
SOUTHEAST corner, Section 32, Township 115 North, Range 28 West

SKETCH OF REFERENCE TIES (NO SCALE)

T. 115 N., R. 28 W.

SECTION 32

SECTION 33



SECTION 5

SECTION 4

T. 114 N., R. 28 W.

Statement of evidence relative to this corner location on sheet 2

I hereby certify that this document was prepared by me or under my direct supervision.

Willard Pellinen  
Willard Pellinen  
McLeod County Surveyor  
License No. 9626.

Date Feb. 2, 1995.

OFFICE OF THE COUNTY RECORDER  
MCLEOD COUNTY, MINNESOTA

I hereby certify that this document was filed in this office at 9 o'clock A. M. on the 6th day of February 19 95.

Carmen O'Brien Mulder, County Recorder

By \_\_\_\_\_, Deputy.

Document No. 264021

**Certificate of Location of Government Corner**  
**Southeast Corner, Section 32, Township 115 North, Range 28 West**

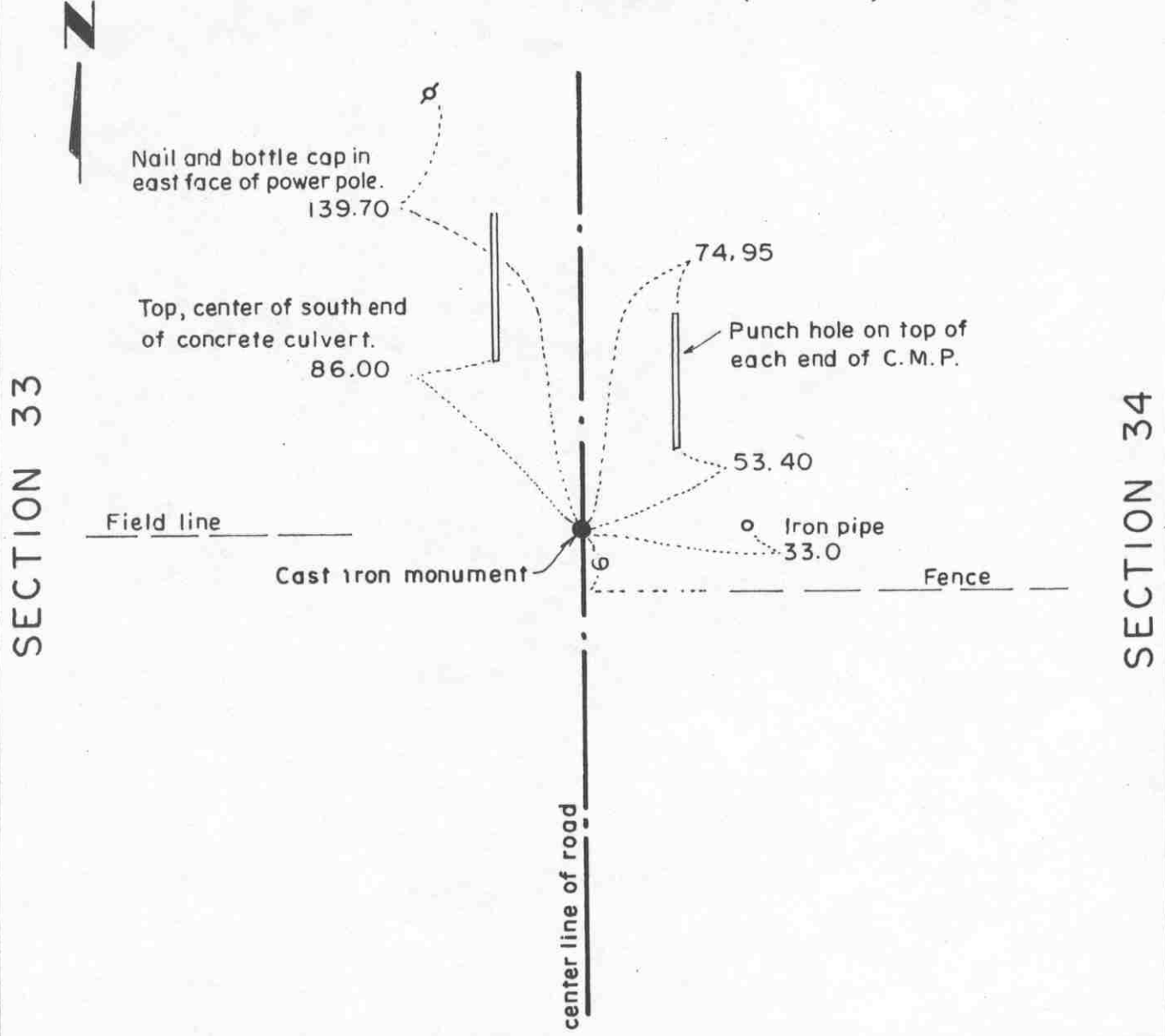
**1855. John Ryan of the General Land Office established this corner. He set a post, deposited charcoal, dug pits and trench, built mound and planted osage orange seeds at the corners of the mound.**

**1974. Delbert Rieke, Sibley County Surveyor, set a cast iron monument at the base of a tipped corner fence post as per testimony by adjoining land owners. This location was accepted by Dickman Knutson, McLeod County Surveyor.**

# Certificate of Location of Government Corner

EAST QUARTER corner, Section 33, Township 115 North, Range 28 West

## SKETCH OF REFERENCE TIES (NO SCALE)



**Statement of evidence relative to this corner location on sheet 2**

I hereby certify that this document was prepared by me or under my direct supervision.

Willard Pellinen  
 Willard Pellinen  
 McLeod County Surveyor  
 License No. 9626.

Date March 13, 1995

**OFFICE OF THE COUNTY RECORDER  
 MCLEOD COUNTY, MINNESOTA**

I hereby certify that this document was filed in this office at 1 o'clock P. M. on the 31st day of March 19 95.

Carmen Ostlie Mulder, County Recorder

By \_\_\_\_\_, Deputy.

Document No. 264944

**Certificate of Location of Government Corner**  
**East Quarter Corner, Section 33, Township 115 North, Range 28 West**

*July, 1855. A. H. Runyon of the General Land Office established this corner. He set a post, drove a charred stake, raised mound with trench and planted apple seeds at the southeast corner of the mound.*

*1972. Adjoining land owners say fence running west is along east-west quarter line of Section 33.*

*May 12, 1972. Dickman Knutson, county surveyor, excavated for the corner (John Tupa from Hutchinson with a backhoe). Down 4 feet below the surface of the road they found a rotted wood post. They took reference ties to the post. This was in the center of the north-south road in line with the fence to the west.*

*October 12, 1973. Knutson set a McLeod County cast iron monument at the corner.*

*January 27, 1995. We checked the reference ties to the monument. Field line to the west now instead of the fence.*

*The monument set by Knutson is accepted as marking the location of the government corner. It fits long standing occupation lines (the fence, now field line, and the road) and it perpetuates the location of an older monument (the wood post).*

# Certificate of Location of Government Corner

NORTHEAST corner, Section 33, Township 115 North, Range 28 West

## SKETCH OF REFERENCE TIES (NO SCALE)



SECTION 28

SECTION 27

Nail and bottle cap in east face of power pole.

125.08

1/2 inch iron pipe in shoulder of road.

19.47

Cast iron monument

Nail and bottle cap in west face of 18 inch twin popple, up 4 feet.

80.78

Center line of road.

SECTION 33

SECTION 34

### Statement of evidence relative to this corner location on sheet 2

I hereby certify that this document was prepared by me or under my direct supervision.

Willard Pellinen  
Willard Pellinen  
McLeod County Surveyor  
License No. 9626.

Date March 20, 1995

### OFFICE OF THE COUNTY RECORDER MCLEOD COUNTY, MINNESOTA

I hereby certify that this document was filed in this office at 1 o'clock P. M. on the 31st day of March 19 95.

Carmen Estlie Mulder, County Recorder

By \_\_\_\_\_, Deputy.

Document No. 264943

**Certificate of Location of Government Corner**  
**Northeast Corner, Section 33, Township 115 North, Range 28 West**

*July, 1855. A. H. Runyon of the General Land Office established this corner. He set a post, drove charred stake, raised mound with trench and planted apple seeds at the southeast corner of the mound.*

*1972. William Jensen, 67 years old, area resident, said there was a wood stake at the corner about 30 years ago.*

*May 12, 1972. Dickman Knutson, county surveyor, excavated for the corner (John Tupa from Hutchinson with a backhoe). They found a wood stake and a 10 inch diameter stone directly below the stake. They took reference ties.*

*October 19, 1973. Knutson set a McLeod County cast iron monument and took additional ties.*

*January 27, 1995. We found the top of the monument had been broken off 6 inches below the surface of the road. The bottom portion of the monument was in good condition. We took new reference ties.*

# Certificate of Location of Government Corner

NORTH QUARTER corner, Section 33, Township 115 North, Range 28 West

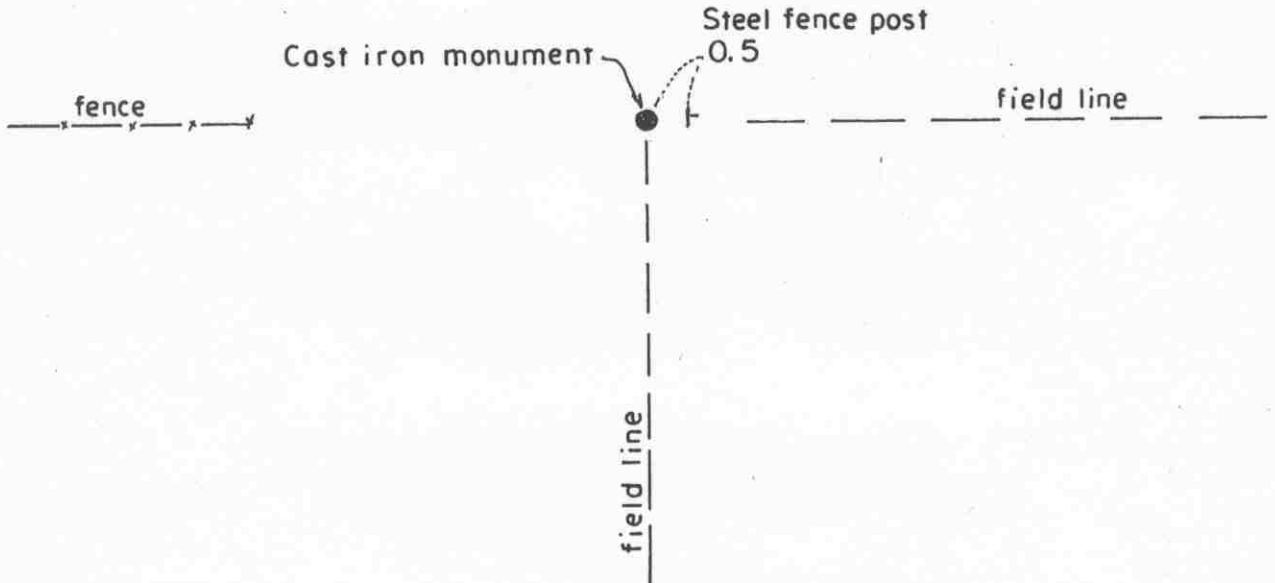
SKETCH OF REFERENCE TIES (NO SCALE)

SECTION 28



2646.54 feet to NW cor. of Sec. 33  
2646.54 feet to NE cor. of Sec. 33

1/4 cor. is 16.54 feet north of straight line between section corners.



SECTION 33

Statement of evidence relative to this corner location on sheet 2

I hereby certify that this document was prepared by me or under my direct supervision.

Willard Pellinen  
Willard Pellinen  
McLeod County Surveyor  
License No. 9626.

Date Feb. 3, 1995.

OFFICE OF THE COUNTY RECORDER  
MCLEOD COUNTY, MINNESOTA

I hereby certify that this document was filed in this office at 9 o'clock A.M. on the 6th day of February, 19 95.

Carmen Ottilie Mulder, County Recorder

By \_\_\_\_\_, Deputy.

Document No. 264023



**Certificate of Location of Government Corner**  
**North Quarter Corner, Section 33, Township 115 North, Range 28 West**

**1856. A. H. Runyon of the General Land Office originally established this corner. He set a post, drove a charred stake, raised mound with trench and pits, and planted apple seeds at the southeast corner of the mound.**

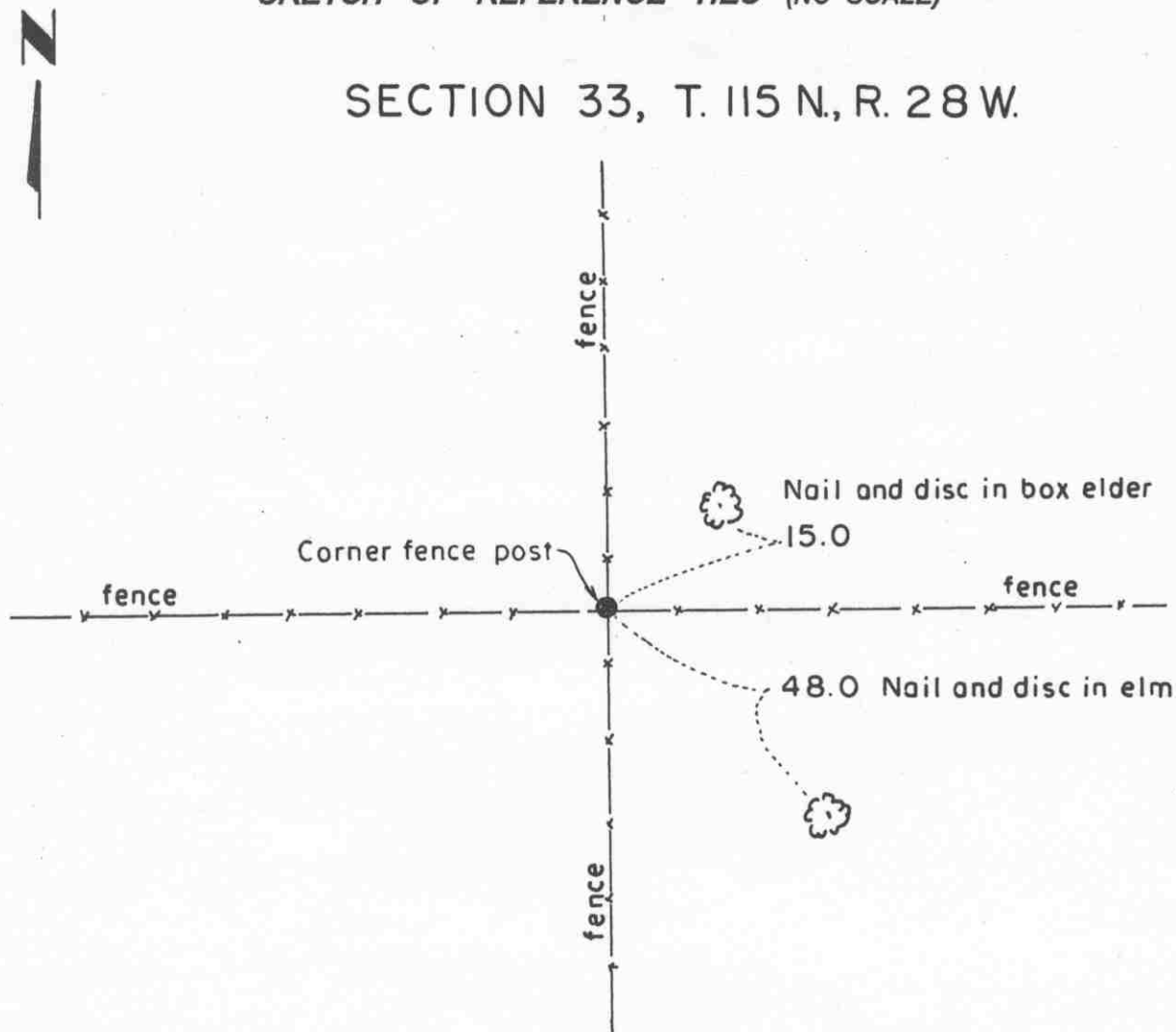
**July 25, 1974. Dickman Knutson, county surveyor, set a McLeod County cast iron monument half way between the northeast and nothwest corners of Section 33, at the easterly prolongation of a fence. This fence has been accepted by adjoining land owners as being along the section line.**

**February 3, 1995. The monument set by Knutson is accepted as marking the government corner.**

# Certificate of Location of Government Corner

SOUTH QUARTER corner, Section 33, Township 115 North, Range 28 West

SKETCH OF REFERENCE TIES (NO SCALE)



SECTION 33, T. 115 N., R. 28 W.

SECTION 4, T. 114 N., R. 28 W.

Statement of evidence relative to this corner location on sheet 2

I hereby certify that this document was prepared by me or under my direct supervision.

Willard Pellinen  
Willard Pellinen  
McLeod County Surveyor  
License No. 9626.

Date Feb. 2, 1995

OFFICE OF THE COUNTY RECORDER  
MCLEOD COUNTY, MINNESOTA

I hereby certify that this document was filed in this office at 9 o'clock A. M. on the 6th day of February, 19 95.

Carmen Estlin Mulder, County Recorder

By \_\_\_\_\_, Deputy.

Document No. 264024

**Certificate of Location of Government Corner**  
**South Quarter Corner, Section 33, Township 115 North, Range 28 West**

**1855. John Ryan of the General Land Office established this corner. He set a post, deposited charcoal, dug pits and trench, built mound and planted osage orange seeds at the corners of the mound.**

**1974. Delbert Rieke, Sibley County Surveyor, had testimony from adjoining land owners that the fence corner is the quarter corner. Rieke left the corner fence post in place and took reference ties. Dickman Knutson, McLeod County Surveyor, accepted this location as the government corner.**

# Certificate of Location of Government Corner

SOUTHEAST corner, Section 33, Township 115 North, Range 28 West

SKETCH OF REFERENCE TIES (NO SCALE)

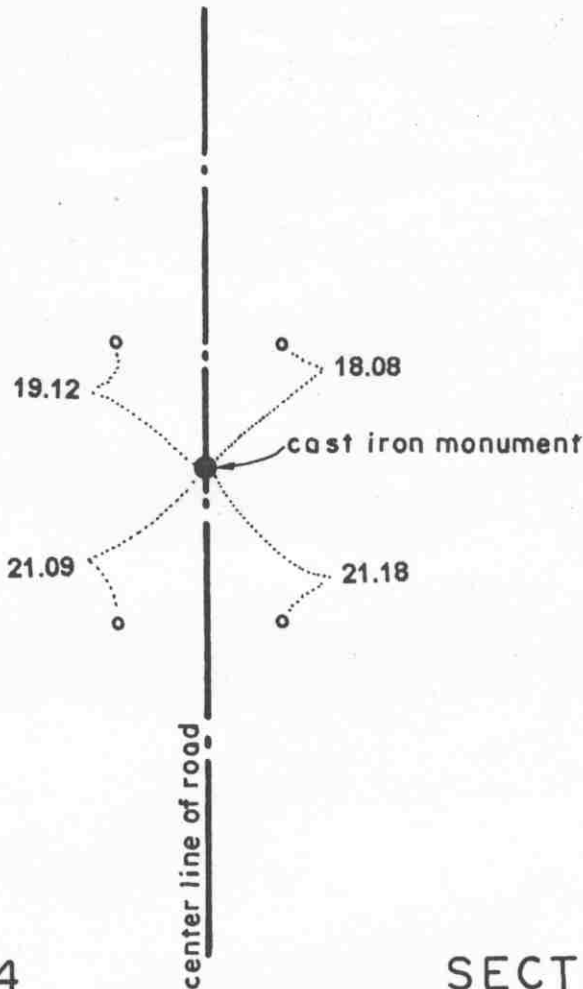
T. 115 N., R. 28 W.

SECTION 33

SECTION 34



o Denotes iron pipe  
in shoulder of road



SECTION 4

SECTION 3

T. 114 N., R. 28 W.

Statement of evidence relative to this corner location on sheet 2

I hereby certify that this document was prepared by me or under my direct supervision.

Willard Pellinen  
Willard Pellinen  
McLeod County Surveyor  
License No. 9626.

Date June 9, 1995

OFFICE OF THE COUNTY RECORDER  
MCLEOD COUNTY, MINNESOTA

I hereby certify that this document was filed in this office at 2 o'clock P. M. on the 13th day of June 19 95.

CARMIER OSTLE MILDORF, MCLEOD COUNTY RECORDER, County Recorder

By Dhyllis Sopkowiak, Deputy.

Document No. 266259

**Certificate of Location of Government Corner**  
**Southeast Corner, Section 33, Township 115 North, Range 28 West**

**1855. John Ryan of the General Land Office established this corner. He set a post, deposited charcoal, dug pits and trench, built mound and planted osage orange seeds at the corners of the mound.**

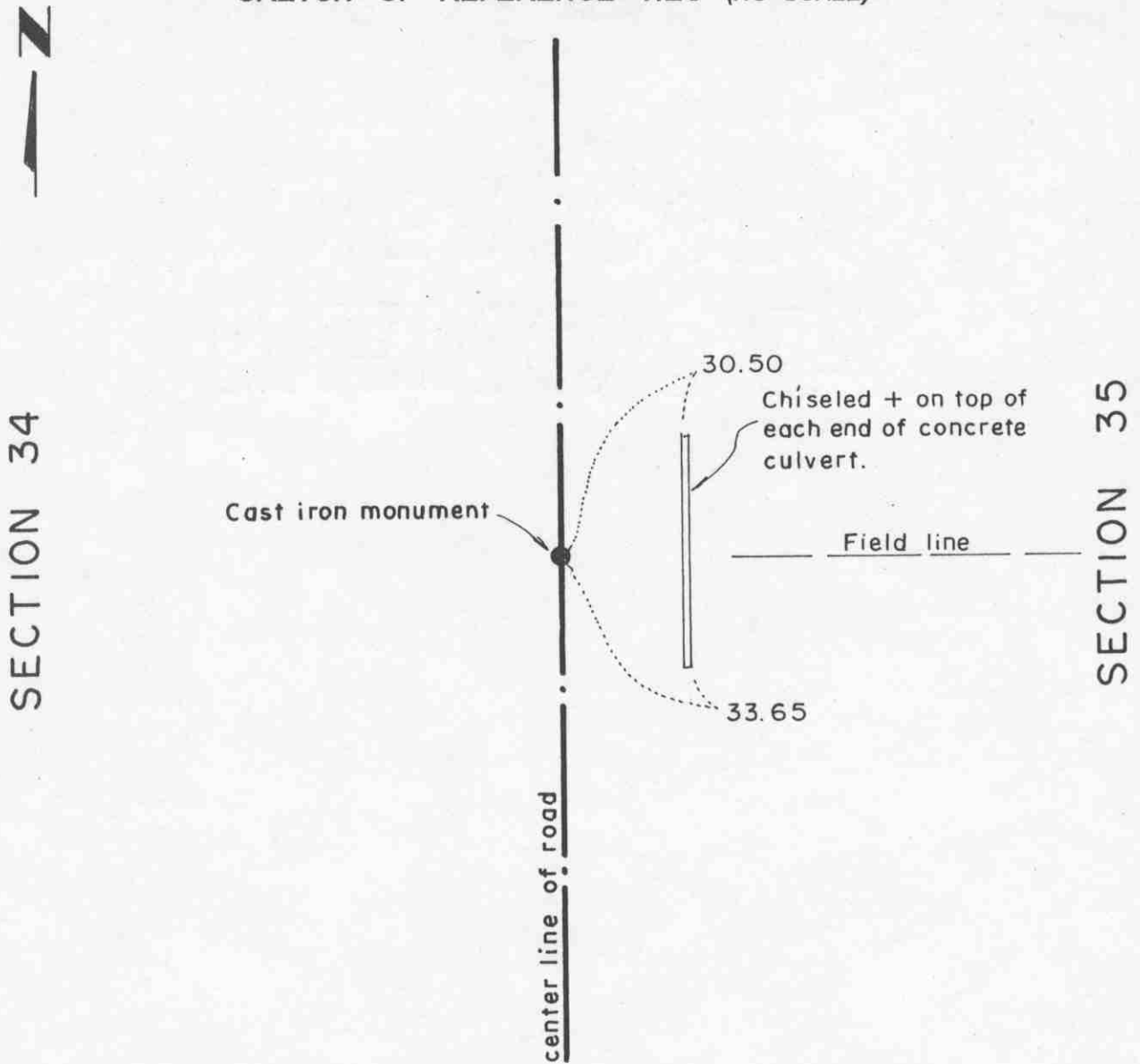
**1974. Delbert Rieke, Sibley County Surveyor, set a cast iron monument in the center of the north-south road in line with a fence to the west. Adjoining land owners all agree this is the correct location. Dickman Knutson, McLeod County Surveyor accepted the monument as marking the location of the government corner.**

**March 30, 1995. We took new available reference ties to the corner.**

# Certificate of Location of Government Corner

EAST QUARTER corner, Section 34, Township 115 North, Range 28 West

SKETCH OF REFERENCE TIES (NO SCALE)



**Statement of evidence relative to this corner location on sheet 2**

I hereby certify that this document was prepared by me or under my direct supervision.

Willard Pellinen  
 Willard Pellinen  
 McLeod County Surveyor  
 License No. 9626.

Date March 13, 1995

**OFFICE OF THE COUNTY RECORDER  
 MCLEOD COUNTY, MINNESOTA**

I hereby certify that this document was filed in this office at 1 o'clock P. M. on the 31st day of March 19 95.

Carmen Josie Mulder, County Recorder

By \_\_\_\_\_, Deputy.

Document No. 264946

**Certificate of Location of Government Corner**  
**East Quarter Corner, Section 34, Township 115 North, Range 28 West**

*July, 1855. A. H. Runyon of the General Land Office established this corner. He set a post and marked a 6 inch aspen and a 9 inch aspen for bearing trees.*

*May 12, 1972. Dickman Knutson, county surveyor, excavated for the corner (John Tupa from Hutchinson with a backhoe). Down 4 feet below the surface of the road they found a small 4 inch by 4 inch stone, sharp point up. They took reference ties and directly below the small stone, they found an 8 inch diameter stone with a wood stake alongside. This was in the center of the north-south road in line with a field line to the east.*

*October 12, 1973. Knutson set a McLeod County cast iron monument at the corner.*

*January, 1995. The monument set by Knutson is accepted as marking the location of the government corner. It fits long standing occupation lines and it perpetuates the location of older monuments.*

*January 27, 1995. We checked the reference ties.*

# Certificate of Location of Government Corner

NORTHEAST corner, Section 34, Township 115 North, Range 28 West

SKETCH OF REFERENCE TIES (NO SCALE)



SECTION 27

SECTION 26

Nail and disc in east face of guy pole. 47.72

Nail and bottle cap in SE face of power pole. 48.70

Cast iron monument

center line of road

66.78  
Nail and bottle cap in SW face of post by telephone pedestal.

Nail and disc in east face of power pole. 188.27

SECTION 34

SECTION 35

center line of road

Statement of evidence relative to this corner location on sheet 2

I hereby certify that this document was prepared by me or under my direct supervision.

Willard Pellinen  
Willard Pellinen  
McLeod County Surveyor  
License No. 9626.

Date March 20, 1995

OFFICE OF THE COUNTY RECORDER  
MCLEOD COUNTY, MINNESOTA

I hereby certify that this document was filed in this office at 1 o'clock P. M. on the 31st day of March 1995.

Carmen Ozlie Mulder County Recorder

By \_\_\_\_\_, Deputy.

Document No. 264945



**Certificate of Location of Government Corner**  
**Northeast Corner, Section 34, Township 115 North, Range 28 West**

*July, 1855. A. H. Runyon of the General Land Office established this corner. He set a post and marked a 5 inch, a 6 inch and 2 seven inch aspens for bearing trees.*

*May 12, 1972. Dickman Knutson, county surveyor, excavated for the corner (John Tupa from Hutchinson with a backhoe). They found a 1 inch diameter iron pin down 1 1/2 feet below the surface of the road. They took available reference ties. This pin was in the center line of the north-south road and about 2-3 feet south of the center line of the road running east. Leroy Meyer, in the Southeast Quarter of Section 27, said the corner is either south or north of the east-west center line, he couldn't remember which*

*October 12, 1973. Knutson set a McLeod County cast iron monument.*

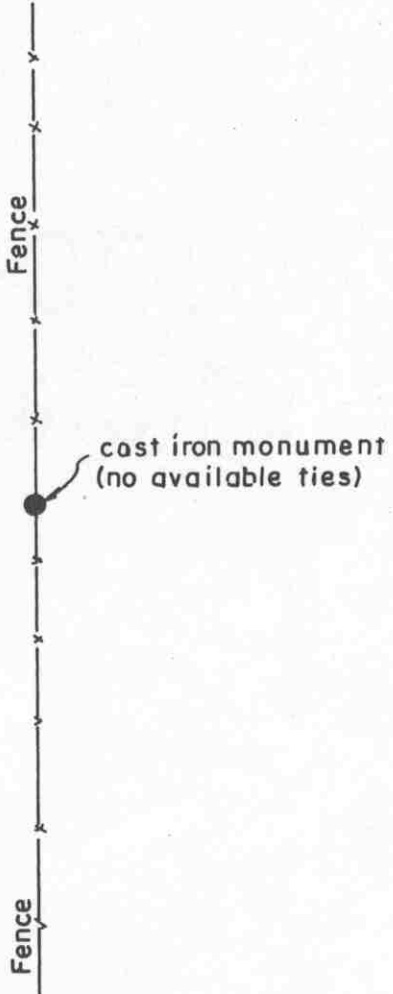
*January 27, 1995. We found the monument in good condition down 4 inches below the surface of the road and took new reference ties.*

# Certificate of Location of Government Corner

NORTH QUARTER corner, Section 34, Township 115 North, Range 28 West

SKETCH OF REFERENCE TIES (NO SCALE)

SECTION 27



SECTION 34

Statement of evidence relative to this corner location on sheet 2

I hereby certify that this document was prepared by me or under my direct supervision.

Willard Pellinen  
Willard Pellinen  
McLeod County Surveyor  
License No. 9626.

Date March 13, 1995

OFFICE OF THE COUNTY RECORDER  
MCLEOD COUNTY, MINNESOTA

I hereby certify that this document was filed in this office at 1 o'clock P. M. on the 31st day of March, 19 95.

Carmen Ostlie Mulder, County Recorder

By \_\_\_\_\_, Deputy.

Document No. 264948

**Certificate of Location of Government Corner**  
**North Quarter Corner, Section 34, Township 115 North, Range 28 West**

*July, 1855. A. H. Runyon of the General Land Office established this corner. He set a post, drove a charred stake, raised mound with trench and planted apple seeds at the southeast corner of the mound.*

*June 21, 1974. No property lines running east or west to help reestablish this corner. Dickman Knutson, county surveyor, found a 1 inch diameter iron pipe near a rotted old wood fence post. This was about 4 feet south of a straight line between the section corners and within 3 feet of being half way between the section corners.*

*Knutson replaced the found iron pipe with a McLeod County cast iron monument.*

*January 27, 1995. We found the monument in good condition along the north-south fence.*

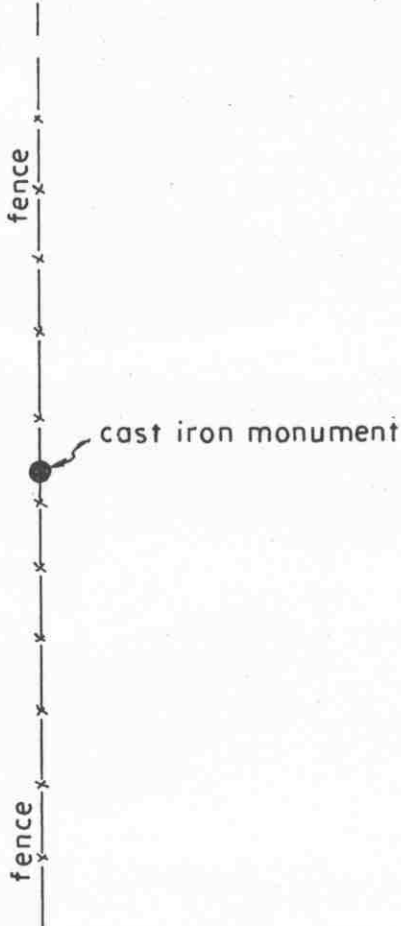
# Certificate of Location of Government Corner

SOUTH QUARTER corner, Section 34, Township 115 North, Range 28 West

SKETCH OF REFERENCE TIES (NO SCALE)



SECTION 34, T.115 N., R.28W.



SECTION 3, T.114 N., R.28

Statement of evidence relative to this corner location on sheet 2

I hereby certify that this document was prepared by me or under my direct supervision.

Willard Pellinen  
Willard Pellinen  
McLeod County Surveyor  
License No. 9626.

Date Feb. 2, 1995

OFFICE OF THE COUNTY RECORDER  
MCLEOD COUNTY, MINNESOTA

I hereby certify that this document was filed in this office at 9 o'clock A. M. on the 6th day of February, 1995.

Carmen O'Brien Mulder County Recorder

By \_\_\_\_\_, Deputy.

Document No. 264025

**Certificate of Location of Government Corner**  
**South Quarter Corner, Section 34, Township 115 North, Range 28 West**

**1855. John Ryan of the General Land Office established this corner. He set a post and marked a 7 inch aspen and an 8 inch aspen as bearing trees.**

**1974. Delbert Rieke, Sibley County Surveyor, set a cast iron monument along a north-south fence on a straight line between the section corners. Warren Horton and Byron Horton, adjoining land owners agreed the fence is the north-south quarter line. Dickman Knutson, McLeod County Surveyor, accepted this location.**

# Certificate of Location of Government Corner

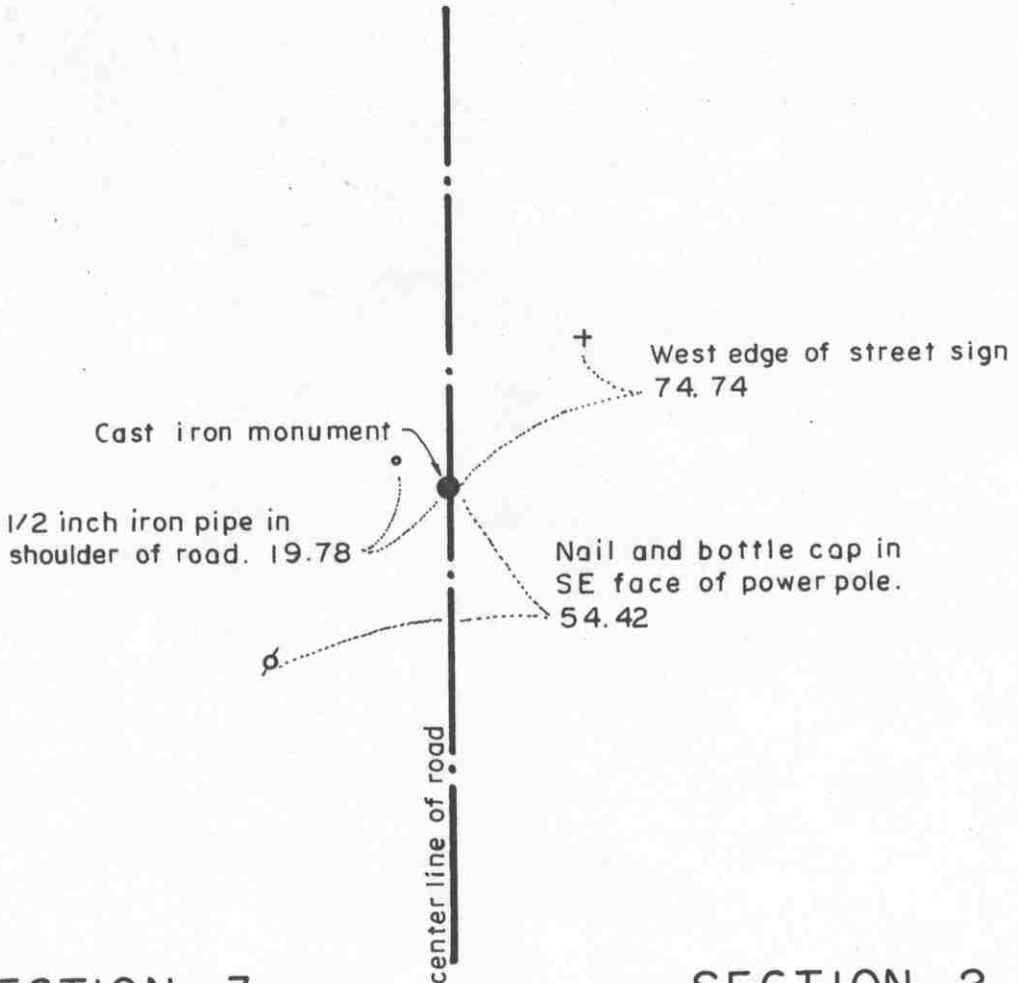
SOUTHEAST corner, Section 34, Township 115 North, Range 28 West

SKETCH OF REFERENCE TIES (NO SCALE)

T. 115 N., R. 28 W.

SECTION 34

SECTION 35



SECTION 3

SECTION 2

T. 114 N., R. 28 W.

Statement of evidence relative to this corner location on sheet 2

I hereby certify that this document was prepared by me or under my direct supervision.

Willard Pellini  
Willard Pellinen  
McLeod County Surveyor  
License No. 9626.

Date March 20, 1995

OFFICE OF THE COUNTY RECORDER  
MCLEOD COUNTY, MINNESOTA

I hereby certify that this document was filed in this office at 1 o'clock P. M. on the 31st day of March 19 95.

Carmen Potlie Mulder, County Recorder

By \_\_\_\_\_, Deputy.

Document No. 264947

**Certificate of Location of Government Corner**  
**Southeast Corner, Section 34, Township 115 North, Range 28 West**

*1855. John Ryan of the General Land Office established this corner. He set a post and marked 3 six inch aspens and a 5 inch aspen for bearing trees.*

*1963. Delbert Rieke, Sibley County Surveyor, set an iron pipe at the corner. His distance to the south quarter corner of Section 34 was within 0.05 foot of old distance by the Sibley County Engineer and Rieke's distance to the south quarter corner of Section 35 was within 0.25 foot of 1891 distance by S.F.Mullen, Sibley County Surveyor.*

*1973. Rieke replaced the iron pipe with a cast iron monument. This location was accepted by Dickman Knutson, McLeod County Surveyor as the government corner.*

*January 27, 1995. We found the monument in good condition down 8 inches below the surface of the road and took new reference ties.*

# Certificate of Location of Government Corner

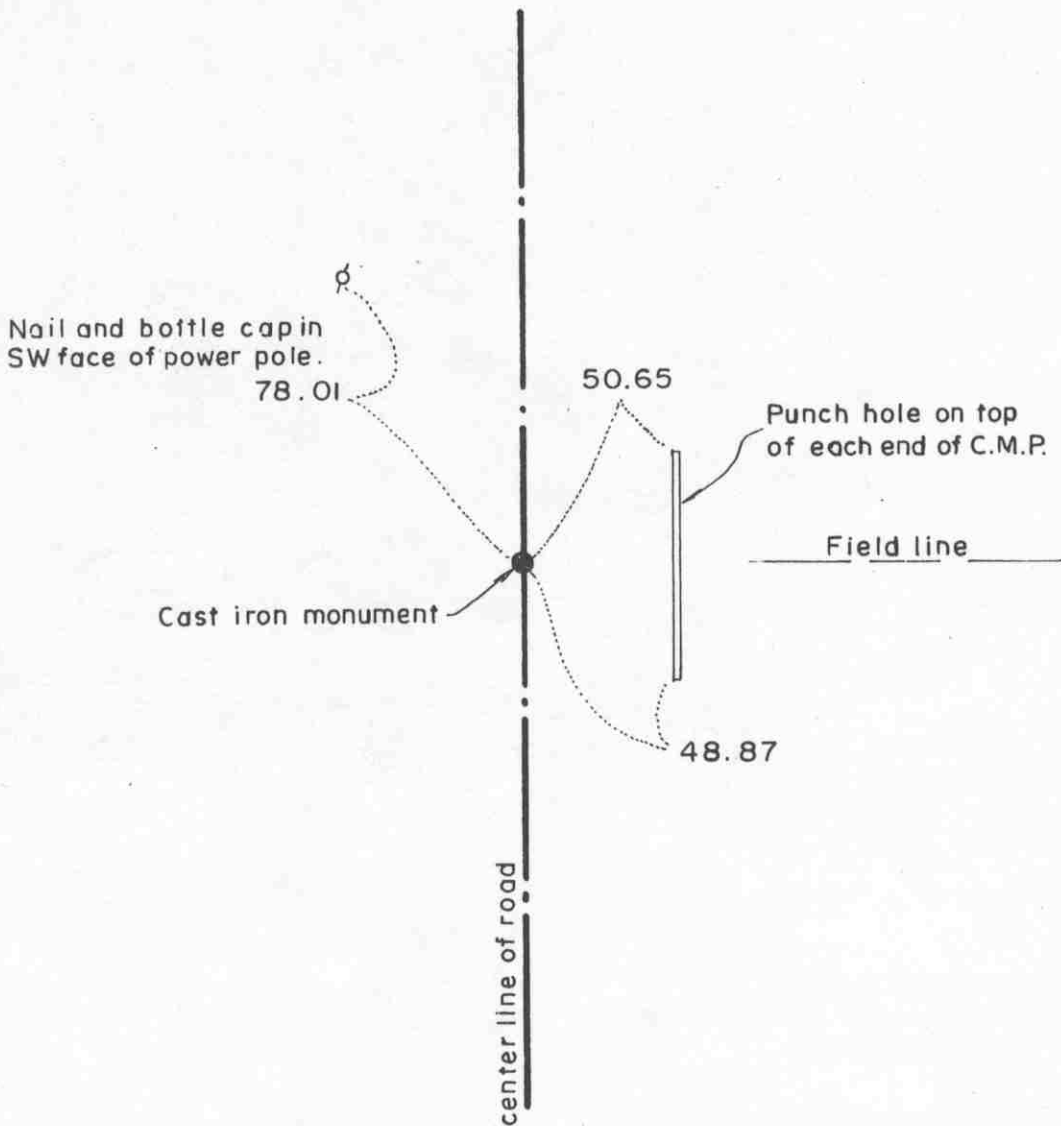
EAST QUARTER corner, Section 35, Township 115 North, Range 28 West

## SKETCH OF REFERENCE TIES (NO SCALE)



SECTION 35

SECTION 36



### Statement of evidence relative to this corner location on sheet 2

I hereby certify that this document was prepared by me or under my direct supervision.

Willard Pellinen  
 Willard Pellinen  
 McLeod County Surveyor  
 License No. 9626.

Date March 6, 1995

### OFFICE OF THE COUNTY RECORDER MCLEOD COUNTY, MINNESOTA

I hereby certify that this document was filed in this office at 9 o'clock A M. on the 16th day of March 19 95.

Charlene Ostlie Guldner, County Recorder

By \_\_\_\_\_, Deputy.

Document No. 264720



**Certificate of Location of Government Corner**  
**East Quarter Corner, Section 35, Township 115 North, Range 28 West**

*July, 1855. A. H. Runyon of the General Land Office established this corner. He set a post and marked a 20 inch aspen and a 5 inch cherry tree for bearing trees.*

*1965. Roy Hansen, surveyor, found an iron pin at the corner.*

*February 3, 1972. Mr. Ben Brelje, 70 years old and had lived in the Northwest Quarter of Section 36 all his life, said he pulled out the iron rod at the quarter corner and set a steel axle. Dickman Knutson, county surveyor, found the axle and took reference ties.*

*October 4, 1973. Knutson replaced the axle with a McLeod County cast iron monument.*

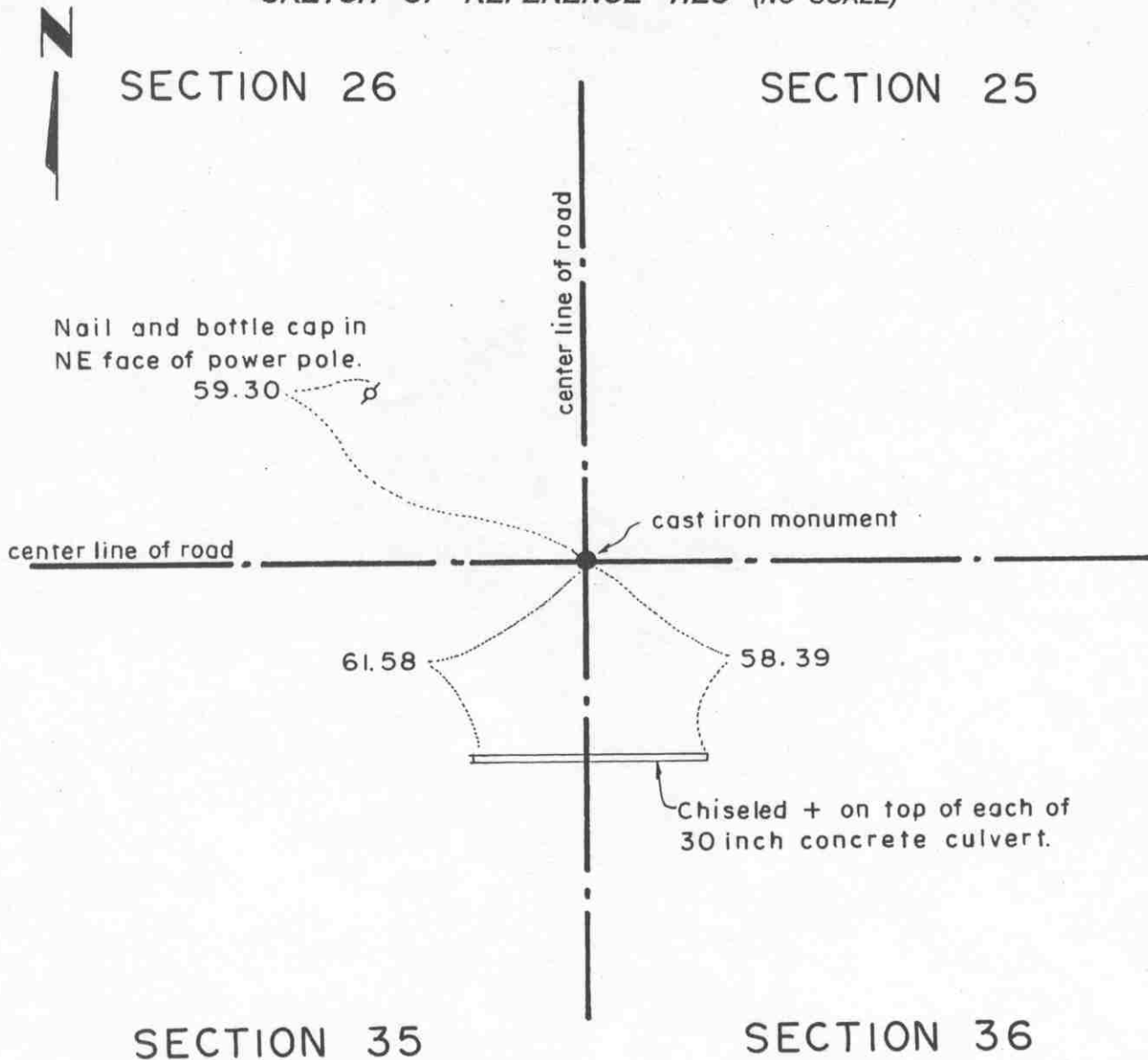
*January, 1995. The monument set by Knutson is accepted as marking the location of the quarter corner. It fits a long standing occupation line and it perpetuates the location of an older monument.*

*January 31, 1995. We found the monument in good condition down 10 inches below the surface of the bituminous road and took new reference ties.*

# Certificate of Location of Government Corner

NORTHEAST corner, Section 35, Township 115 North, Range 28 West

SKETCH OF REFERENCE TIES (NO SCALE)



### Statement of evidence relative to this corner location on sheet 2

I hereby certify that this document was prepared by me or under my direct supervision.

Willard Pellinen  
Willard Pellinen  
McLeod County Surveyor  
License No. 9626.

Date March 6, 1995

### OFFICE OF THE COUNTY RECORDER MCLEOD COUNTY, MINNESOTA

I hereby certify that this document was filed in this office at 9 o'clock A. M. on the 16th day of March 19 95.

(Armen) Helge Mulder, County Recorder

By \_\_\_\_\_, Deputy.

Document No. 264719

***Certificate of Location of Government Corner  
Northeast Corner, Section 35, Township 115 North, Range 28 West***

*July, 1855. A. H. Runyon of the General Land Office established this corner. He set a post and marked 3 aspens and an elm for bearing trees.*

*February 3, 1972. Dickman Knutson, county surveyor, found an iron pipe at the center line intersection of roads north, south, east and west.*

*October 4, 1973. Knutson replaced the iron pipe with a McLeod County cast iron monument and took reference ties. This point agrees with old survey distances north, south and east.*

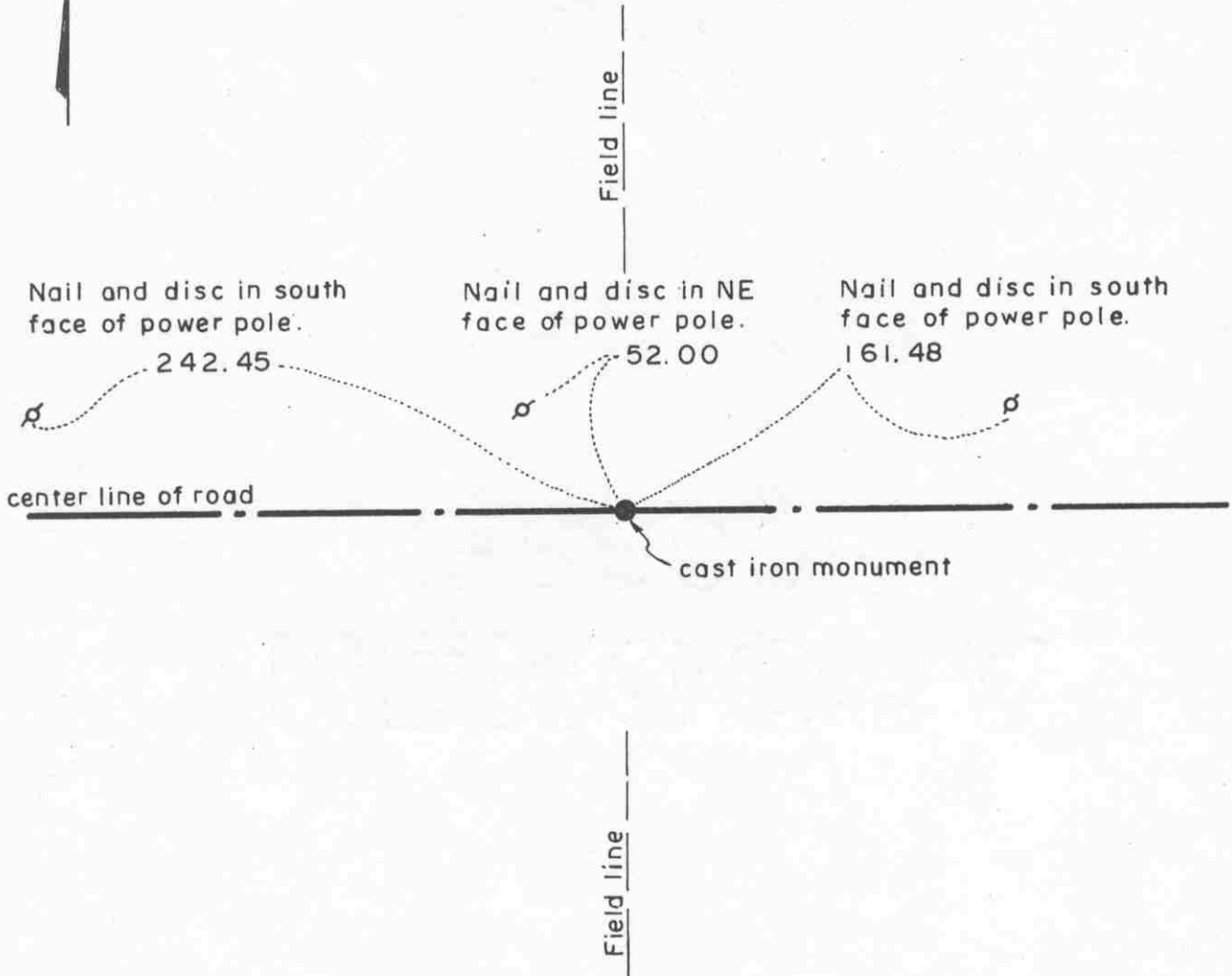
*January 31, 1995. We checked the reference ties.*

# Certificate of Location of Government Corner

NORTH QUARTER corner, Section 35, Township 115 North, Range 28 West

SKETCH OF REFERENCE TIES (NO SCALE)

## SECTION 26



## SECTION 35

Statement of evidence relative to this corner location on sheet 2

I hereby certify that this document was prepared by me or under my direct supervision.

Willard Pellinen  
Willard Pellinen  
McLeod County Surveyor  
License No. 9626.

Date March 13, 1995

OFFICE OF THE COUNTY RECORDER  
MCLEOD COUNTY, MINNESOTA

I hereby certify that this document was filed in this office at 1 o'clock P. M. on the 31st day of March 19 95.

Carmen Dotlie Mulder County Recorder

By \_\_\_\_\_, Deputy.

Document No. 264950

**Certificate of Location of Government Corner**  
**North Quarter Corner, Section 35, Township 115 North, Range 28 West**

*July, 1855. A. H. Runyon of the General Land Office established this corner. He set a post and marked a 5 inch aspen and a 9 inch aspen for bearing trees.*

*1951. Old survey field notes show a hub at the corner, half way between the section corners.*

*1972. Center line of the east-west road in line with field lines north and south has been accepted as the quarter corner.*

*May 12, 1972. Dickman Knutson, county surveyor, excavated for the corner (John Tupa from Hutchinson with a backhoe). Down 2 feet below the surface of the road they found a wood hub. They took reference ties and directly below the wood hub they found an 8 inch diameter stone. This was in the center of the road in line with the field lines.*

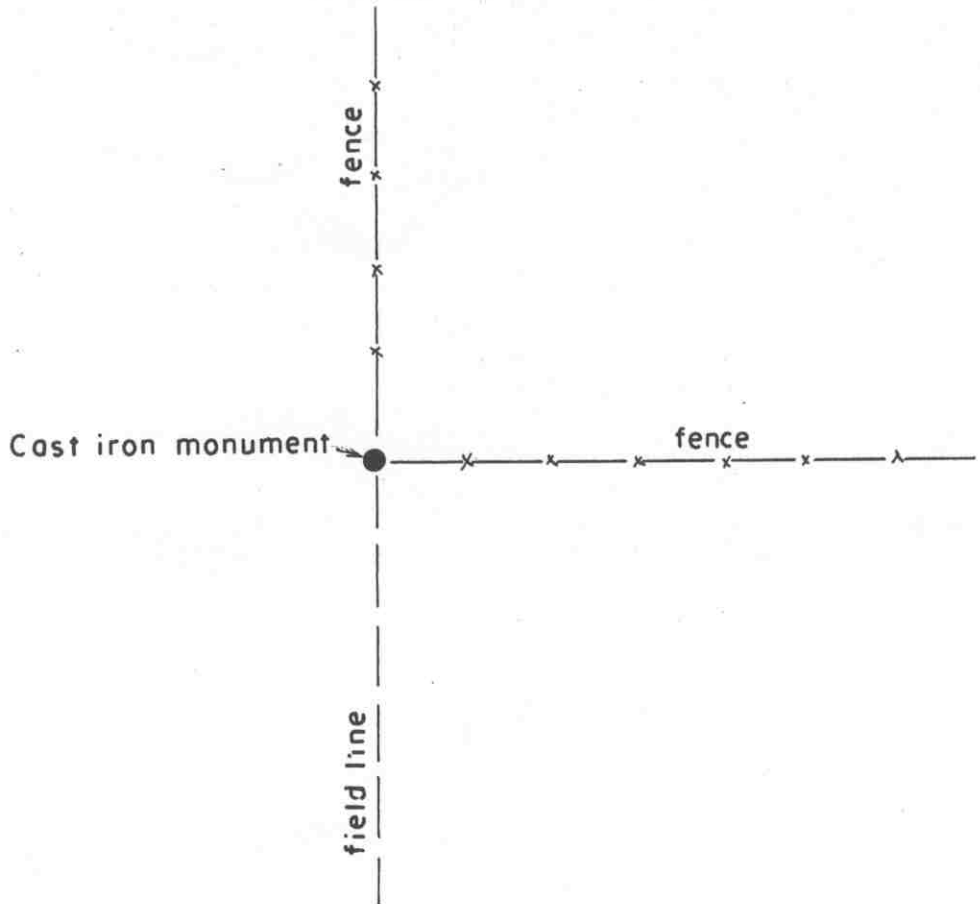
*1985. We measured the north line of Section 35 and found the monument to be within 0.7 foot of being half way between the section corners. We measured 2666.44 feet to the northwest corner of Section 35 and 2665.15 feet to the northeast corner of Section 35 compared with 1951 distances of 2665.3 feet to each corner.*

# Certificate of Location of Government Corner

SOUTH QUARTER corner, Section 35, Township 115 North, Range 28 West

SKETCH OF REFERENCE TIES (NO SCALE)

SECTION 35, T. 115 N., R. 28 W.



SECTION 2, T. 114 N., R. 28 W.

### Statement of evidence relative to this corner location on sheet 2

I hereby certify that this document was prepared by me or under my direct supervision.

Willard Pellinen  
Willard Pellinen  
McLeod County Surveyor  
License No. 9626.

Date Feb. 2, 1995

### OFFICE OF THE COUNTY RECORDER MCLEOD COUNTY, MINNESOTA

I hereby certify that this document was filed in this office at 9 o'clock A. M. on the 6th day of February, 19 95.

Carmen Estlie Mulder, County Recorder

By \_\_\_\_\_, Deputy.

Document No. 264026

**Certificate of Location of Government Corner**  
**South Quarter Corner, Section 35, Township 115 North, Range 28 West**

*1855. John Ryan of the General Land Office established this corner. He set a post and marked a 6 inch aspen and an 10 inch aspen as bearing trees.*

*1973. Delbert Rieke, Sibley County Surveyor, set a cast iron monument at a fence intersection, fences north and east as per testimony by adjoining property owners. This was within 3 feet of being half way between section corners and about 2 feet south of a straight line between the section corners. Dickman Knutson, McLeod County Surveyor accepted this location as being the government corner.*

# Certificate of Location of Government Corner

SOUTHEAST corner, Section 35, Township 115 North, Range 28 West

SKETCH OF REFERENCE TIES (NO SCALE)

T.115N., R.28W.

SECTION 35

SECTION 36

Nail and bottle cap in east face of power pole.

164.36

49.23

Cast iron monument

Field line

Punch hole on top of each end of 15 inch plastic corrugated culvert.

42.73

2

Nail and bottle cap in north face of 6 inch elm, up 5 feet.

55.55

center line of road

SECTION 2

SECTION 1

T.114N., R.28W.

Statement of evidence relative to this corner location on sheet 2

I hereby certify that this document was prepared by me or under my direct supervision.

Willard Pellinen  
Willard Pellinen  
McLeod County Surveyor  
License No. 9626.

Date March 20, 1995

OFFICE OF THE COUNTY RECORDER  
MCLEOD COUNTY, MINNESOTA

I hereby certify that this document was filed in this office at 1 o'clock P. M. on the 31st day of March 19 95.

Carmen Ostlie Mulder, County Recorder

By \_\_\_\_\_, Deputy.

Document No. 264949



**Certificate of Location of Government Corner**  
**Southeast Corner, Section 35, Township 115 North, Range 28 West**

**1855. John Ryan of the General Land Office established this corner. He set a post and marked a ten inch and 3 twelve inch oaks for bearing trees.**

**1891. S. F. Mullen, Sibley County Surveyor, found this corner.**

**1925. I. W. Grace, Sibley County Surveyor shows a stone at this corner.**

**1940. A. Lehman found an oak stake and a stone at the corner and set an iron pipe on top.**

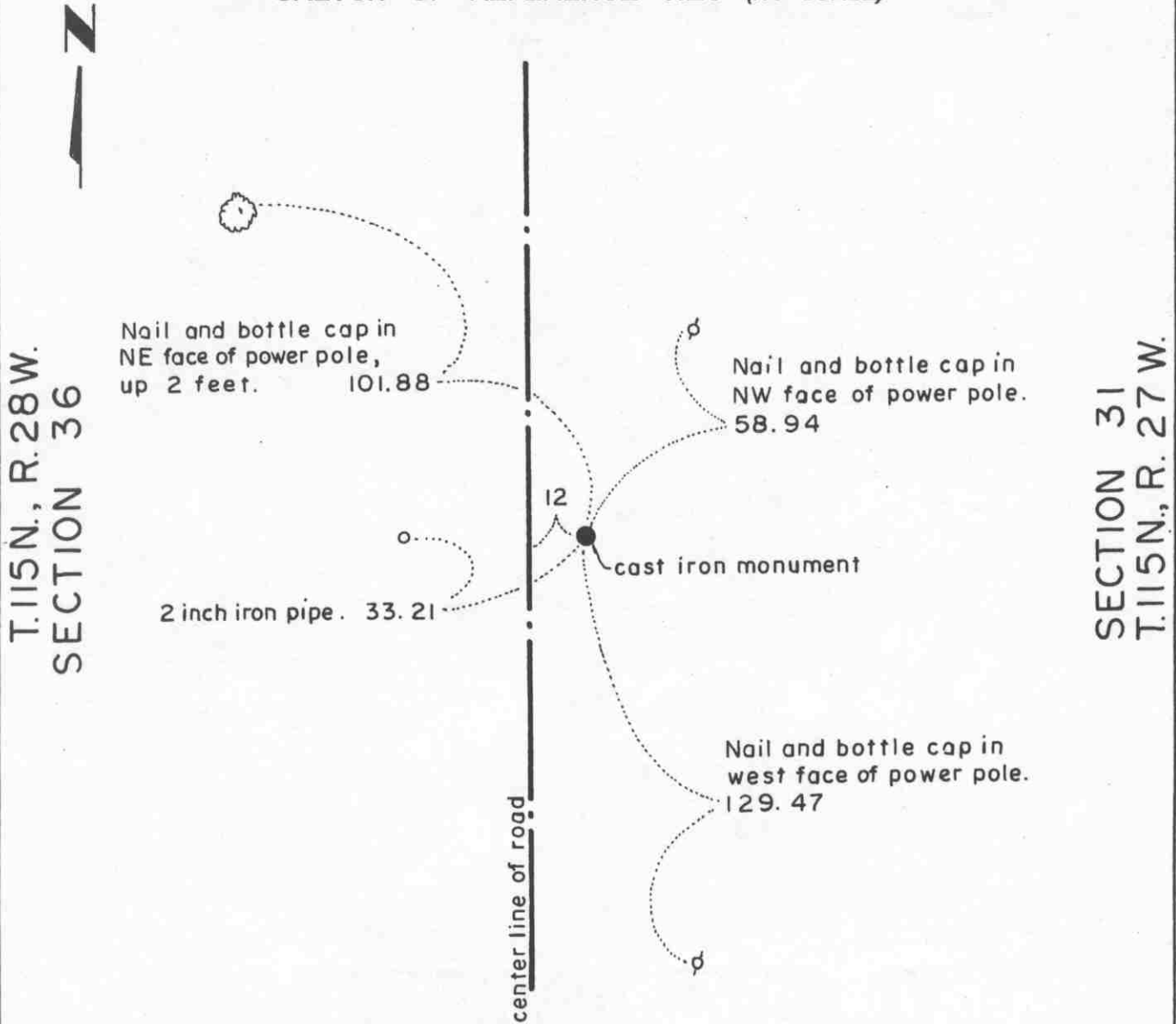
**1973. Delbert Rieke, Sibley County Surveyor, found an iron pipe 2 1/2 feet west of the center of the north-south road. Rieke's distance to the south quarter corner of Section 36 is within 1 foot of 1891 distance by Mullen. Rieke set a railroad spike at the corner and took ties. Dickman Knutson, McLeod County Surveyor, accepted this location as being the government corner.**

**January 31, 1995. We checked the reference ties.**

# Certificate of Location of Government Corner

EAST QUARTER corner, Section 36, Township 115 North, Range 28 West

## SKETCH OF REFERENCE TIES (NO SCALE)



### Statement of evidence relative to this corner location on sheet 2

I hereby certify that this document was prepared by me or under my direct supervision.

Willard Pellinen  
 Willard Pellinen  
 McLeod County Surveyor  
 License No. 9626.

Date April 20, 1995

### OFFICE OF THE COUNTY RECORDER MCLEOD COUNTY, MINNESOTA

I hereby certify that this document was filed in this office at 9 o'clock A.M. on the 24th day of Apr 19 95.

(Carmen) Estelle M. J. ... County Recorder

By \_\_\_\_\_, Deputy.

Document No. 265322

**Certificate of Location of Government Corner**  
**East Quarter Corner, Section 36, Township 115 North, Range 28 West**

**1855. John Ryan of the General Land Office established this corner. he set a post and marked a 12 inch aspen and a 10 inch aspen for bearing trees.**

**1968. Dickman Knutson, county surveyor, found an iron pipe approximately 10 feet east of the center line of the north-south road. He found a 1 1/2 inch diameter iron pipe 33 feet east of the iron pipe in the road. Mr. Proehl, 70 years old, said the 2 1/2 inch pipe was set 33 feet east of the quarter corner when the road was rebuilt. Knutson replaced the iron pipe in the road with a McLeod County cast iron monument and took reference ties.**

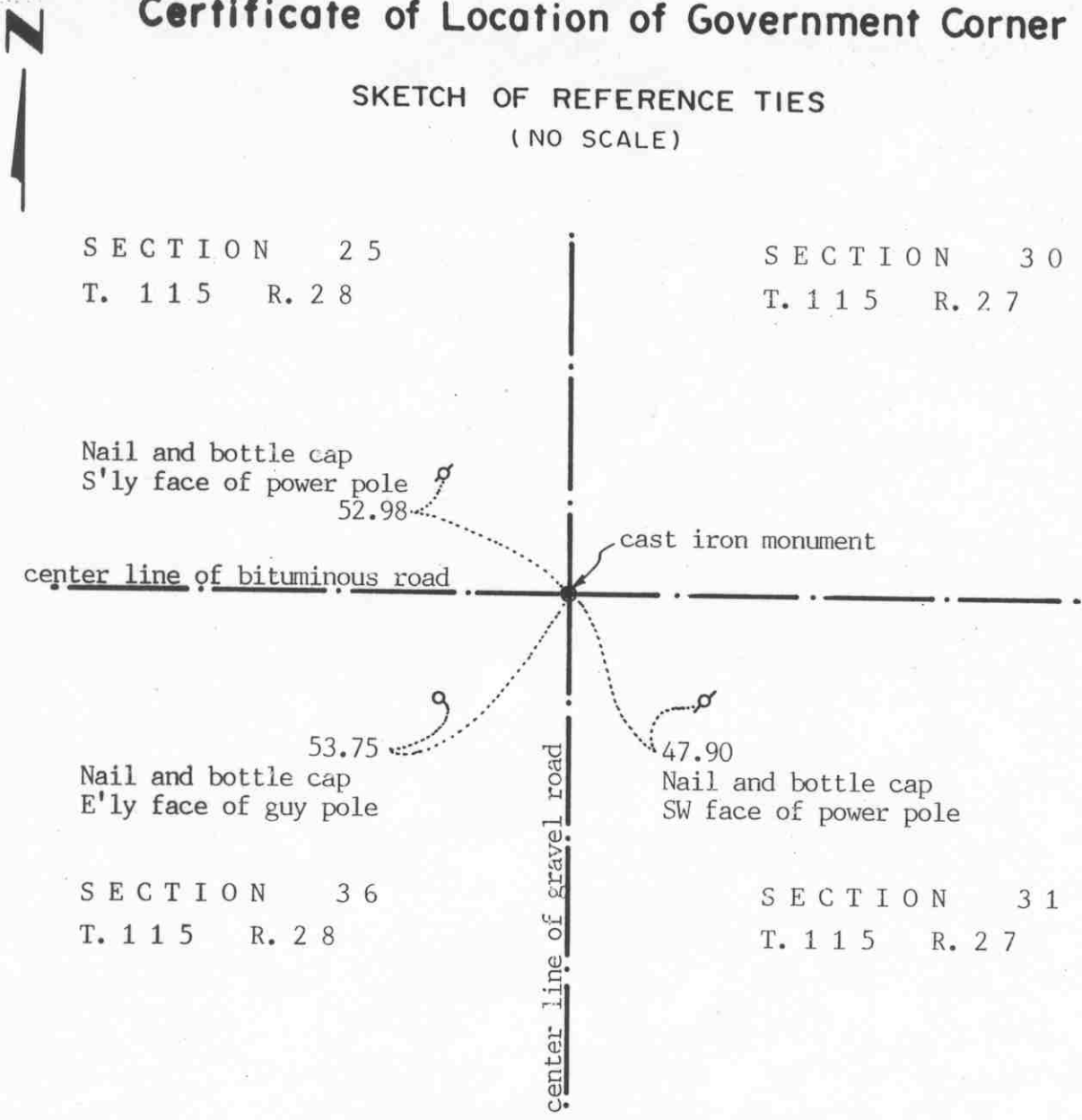
**January 31, 1995. We found the monument in good condition down 6 inches below the surface of the road and took new ties.**

NORTHEAST corner, Section 36, Township 115 North, Range 28 West

# Certificate of Location of Government Corner

## SKETCH OF REFERENCE TIES

(NO SCALE)



SECTION 25  
T. 115 R. 28

SECTION 30  
T. 115 R. 27

SECTION 36  
T. 115 R. 28

SECTION 31  
T. 115 R. 27

### Statement of evidence relative to this corner location on sheet 2

I hereby certify that this document was prepared by me or under my direct supervision.

Willard Pellinen  
Willard Pellinen  
McLeod County Surveyor  
License No. 9626

Date October 18, 1991

OFFICE OF THE COUNTY RECORDER  
MCLEOD COUNTY, MINNESOTA.

I hereby certify that this document was filed in this office at 1 o'clock P.M. on the 21st day of Oct, 1991.

Armen Botchie, County Recorder

By \_\_\_\_\_, Deputy

Document No. 241588

NORTHEAST corner, Section 36, Township 115 North, Range 28 West

## *Certificate of Location of Government Corner*

This corner was originally set by the government in 1855. John Ryan set a post and marked 2 oaks and 2 lindens for bearing trees.

1968. McCombs Knutson Associates (Dickman Knutson, county surveyor) found an iron pin at the center line intersection of the north-south and east-west roads. They replaced the pin with a McLeod County cast iron monument and took reference ties.

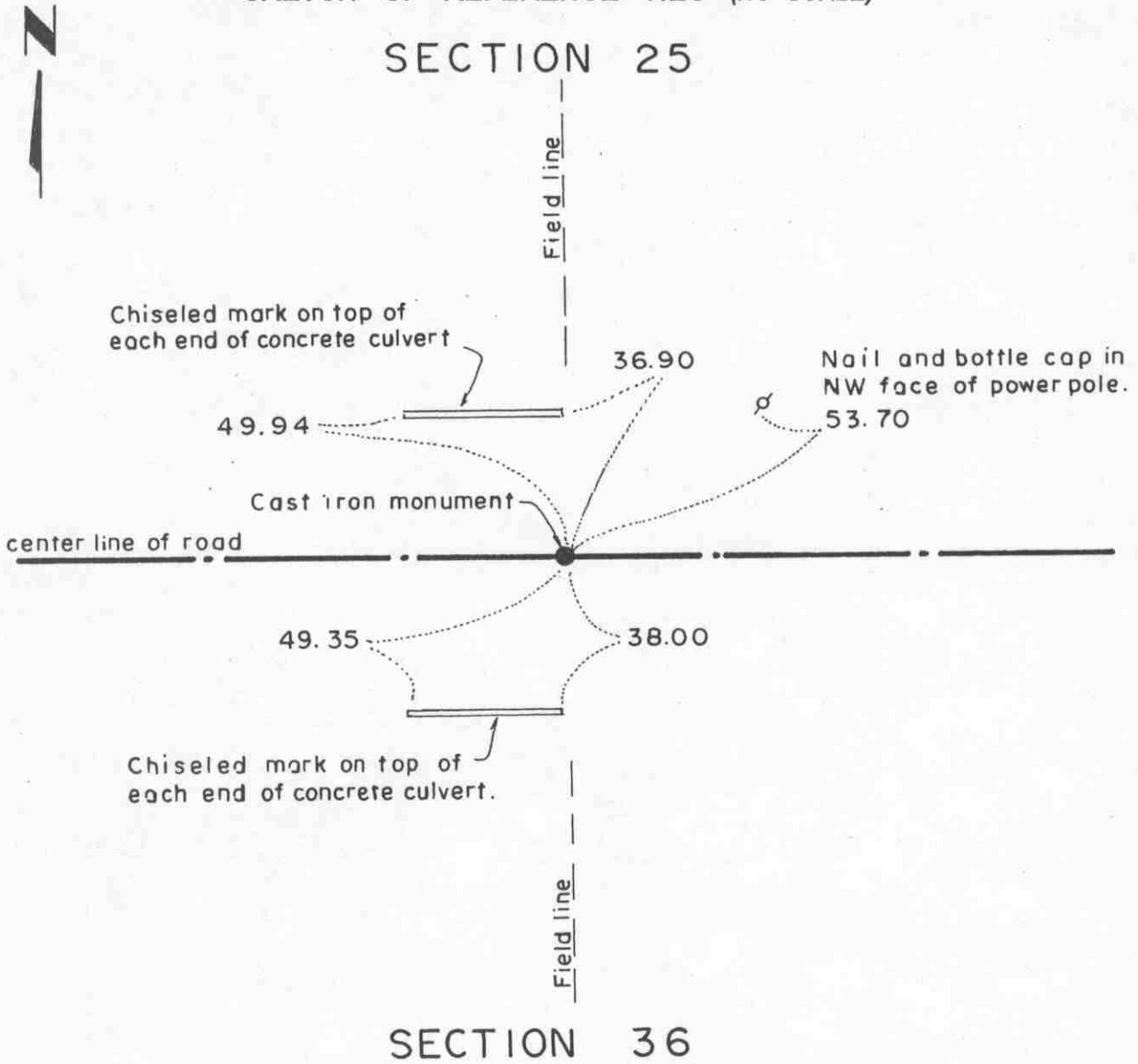
January 1, 1991. We found the monument in good condition and took new reference ties.

We believe the iron pin found by Knutson had perpetuated the correct location of the section corner.

# Certificate of Location of Government Corner

NORTH QUARTER corner, Section 36, Township 115 North, Range 28 West

SKETCH OF REFERENCE TIES (NO SCALE)



Statement of evidence relative to this corner location on sheet 2

I hereby certify that this document was prepared by me or under my direct supervision.

Willard Pellinen  
 Willard Pellinen  
 McLeod County Surveyor  
 License No. 9626.

Date March 6, 1995

OFFICE OF THE COUNTY RECORDER  
 MCLEOD COUNTY, MINNESOTA

I hereby certify that this document was filed in this office at 9 o'clock A. M. on the 16th day of Apr. March 1995.

Carmen O'Brien Gilder, County Recorder

By \_\_\_\_\_, Deputy.

Document No. 264721

**Certificate of Location of Government Corner**  
**North Quarter Corner, Section 36, Township 115 North, Range 28 West**

*July, 1855. A. H. Runyon of the General Land Office established this corner. He set a post and marked a 7 inch aspen and a 7 inch cherry tree for bearing trees.*

*1972. Adjoining land owners have accepted the center of the east-west road in line with the fence to the north as the quarter corner.*

*February 3, 1972. Dickman Knutson, county surveyor, found a 1/2 inch diameter iron pipe at the center of the road in line with the fence.*

*October 4, 1973. Knutson replaced the iron pipe with a McLeod County cast iron monument and took available reference ties.*

*January, 1995. The monument set by Knutson is accepted as marking the location of the government corner. It fits long standing occupation lines (the road and the fence) and it perpetuates the location of an older monument (the iron pipe).*

*January 31, 1995. We checked the reference ties. The fence to the north has been removed and now is a field line.*

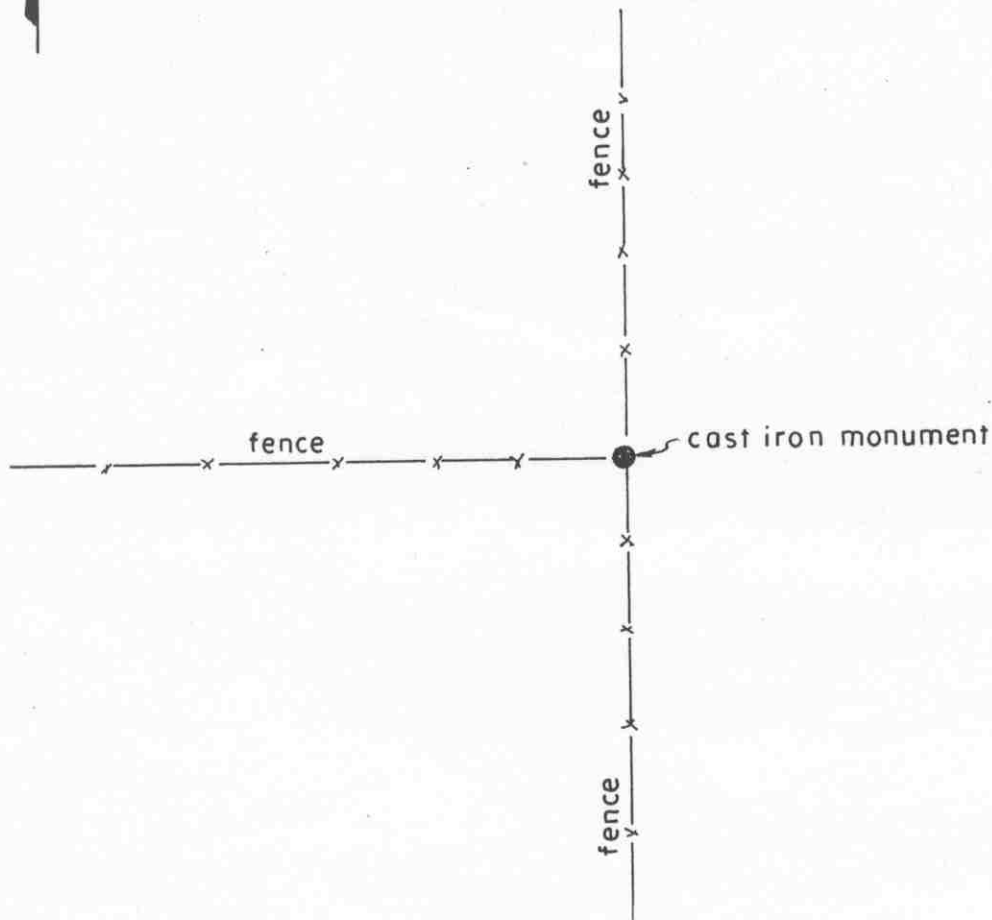
# Certificate of Location of Government Corner

SOUTH QUARTER corner, Section 36, Township 115 North, Range 28 West

SKETCH OF REFERENCE TIES (NO SCALE)



SECTION 36, T. 115 N., R. 28 W.



SECTION 1, T. 114 N., R. 28 W.

Statement of evidence relative to this corner location on sheet 2

I hereby certify that this document was prepared by me or under my direct supervision.

Willard Pellinen  
Willard Pellinen  
McLeod County Surveyor  
License No. 9626.

Date Feb. 2, 1995.

OFFICE OF THE COUNTY RECORDER  
MCLEOD COUNTY, MINNESOTA

I hereby certify that this document was filed in this office at 9 o'clock A.M. on the 6th day of February, 1995.

Carmen Ottilie Mulder, County Recorder

By \_\_\_\_\_, Deputy.

Document No. 264027



**Certificate of Location of Government Corner**  
**South Quarter Corner, Section 36, Township 115 North, Range 28 West**

**1855. John Ryan of the General Land Office established this corner. He set a post and marked a 5 inch aspen and an 8 inch aspen as bearing trees.**

**1973. Delbert Rieke, Sibley County Surveyor, set a cast iron monument at the intersection of fences north, south and west. Dickman Knutson, McLeod County Surveyor, accepted this location as the government corner.**

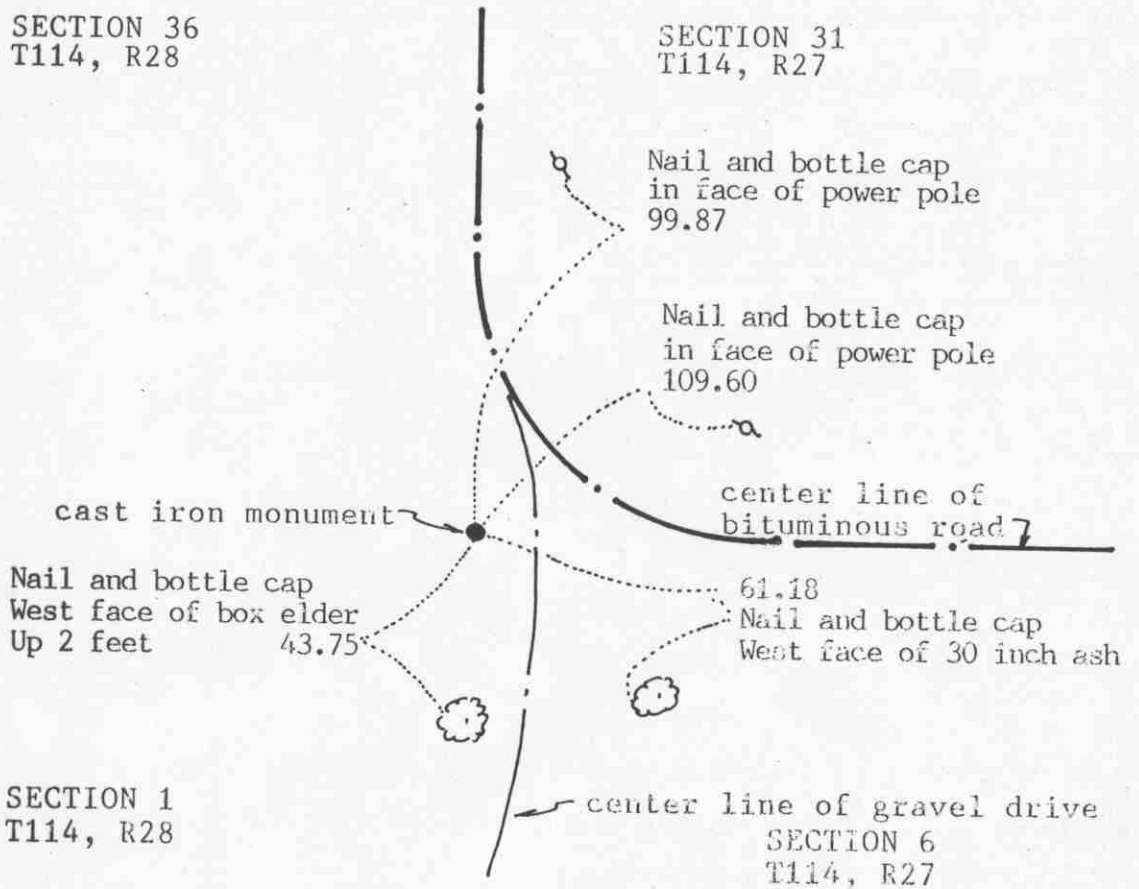
# Certificate of Location of Government Corner



SKETCH OF REFERENCE TIES  
(NO SCALE)

SECTION 36  
T114, R28

SECTION 31  
T114, R27



SECTION 1  
T114, R28

SECTION 6  
T114, R27

Statement of evidence relative to this corner location on sheet 2

I hereby certify that this document was prepared by me or under my direct supervision.

Willard Pellinen

Willard Pellinen  
McLeod County Surveyor  
License No. 9626

Date Feb. 19, 1992

OFFICE OF THE COUNTY RECORDER  
MCLEOD COUNTY, MINNESOTA.

I hereby certify that this document was filed in this office at 9 o'clock A.M. on the 6th day of May, 1992.

Carmen Ostlie, County Recorder

By \_\_\_\_\_, Deputy

Document No. 245076

SOUTHEAST corner, Section 36, Township 115 North, Range 28 West

## Certificate of Location of Government Corner

This corner was originally established by the Government Land Office in July, 1855. John Ryan set a post and marked 3 oaks and 1 elm for bearing trees.

December, 1968. Mr. Proehl (70 years old and has lived in the southeast quarter of Section 36 all his life) said he saw a stone which was moved when the road was graded. He said it was in line with a fence running south and 2 feet south of the fence running west.

McCombs Knutson Associates (Dickman Knutson, county surveyor) set a McLeod County cast iron monument at the location described by Mr. Proehl and took reference ties.

1973. Mr. Hillard Bullert, who lives in the West Half of the Northwest Quarter of Section 6, Township 114, Range 27, said the monument is in the correct location.

June 6, 1991. We found no reference ties remaining, dug and found the monument in good condition 4 inches below the surface. We took new available ties.

The monument is accepted as marking the correct location of the section corner. It fits the occupation lines as per Mr. Proehl and is on the center line P.I. of the gravel road.